

PRODUCT MONOGRAPH  
INCLUDING PATIENT MEDICATION INFORMATION



Bictegravir/emtricitabine/tenofovir alafenamide tablets  
50 mg bictegravir (as bictegravir sodium) / 200 mg emtricitabine / 25 mg tenofovir alafenamide  
(as tenofovir alafenamide hemifumarate), Oral

Antiretroviral Agent

Gilead Sciences Canada, Inc.  
6711 Mississauga Rd, Suite 600  
Mississauga, ON, Canada L5N 2W3

[www.gilead.ca](http://www.gilead.ca)

Date of Initial Authorization:  
July 10, 2018

Date of Revision:  
November 2, 2021

Submission Control No: 250704

## RECENT MAJOR LABEL CHANGES

1 Indications	10/2019
1 Indications, 1.1 Pediatrics	10/2019
1 Indications, 1.2 Geriatrics	05/2021
4 Dosage and Administration, 4.2 Recommended Dose and Dosage Adjustment	10/2019
4 Dosage and Administration, 4.2 Recommended Dose and Dosage Adjustment	05/2021
4 Dosage and Administration, 4.3 Administration	10/2019
7 Warnings and Precautions, General	12/2020
7 Warnings and Precautions, Endocrine and Metabolism	10/2019
7 Warnings and Precautions, Immune Reconstitution Syndrome	05/2019
7 Warnings and Precautions, Renal	05/2021
7 Warnings and Precautions, 7.1 Special Populations, 7.1.1 Pregnant Women	10/2019
7 Warnings and Precautions, 7.1 Special Populations, 7.1.3 Pediatrics	10/2019
7 Warnings and Precautions, 7.1 Special Populations, 7.1.4 Geriatrics	05/2021

## TABLE OF CONTENTS

Sections or subsections that are not applicable at the time of authorization are not listed.

<b>RECENT MAJOR LABEL CHANGES</b> .....	<b>2</b>
<b>TABLE OF CONTENTS</b> .....	<b>2</b>
<b>PART I: HEALTH PROFESSIONAL INFORMATION</b> .....	<b>4</b>
<b>1 INDICATIONS</b> .....	<b>4</b>
1.1 Pediatrics.....	4
1.2 Geriatrics.....	4
<b>2 CONTRAINDICATIONS</b> .....	<b>4</b>
<b>3 SERIOUS WARNINGS AND PRECAUTIONS BOX</b> .....	<b>5</b>
<b>4 DOSAGE AND ADMINISTRATION</b> .....	<b>5</b>
4.1 Dosing Considerations.....	5
4.2 Recommended Dose and Dosage Adjustment.....	5
4.3 Administration.....	6
4.4 Missed Dose.....	6
<b>5 OVERDOSAGE</b> .....	<b>6</b>
<b>6 DOSAGE FORMS, STRENGTHS, COMPOSITION AND PACKAGING</b> .....	<b>7</b>
<b>7 WARNINGS AND PRECAUTIONS</b> .....	<b>8</b>
7.1 Special Populations.....	9
<b>7.1.1 Pregnant Women</b> .....	9
<b>7.1.2 Breast-feeding</b> .....	10
<b>7.1.3 Pediatrics</b> .....	10
<b>7.1.4 Geriatrics</b> .....	10
<b>7.1.5 Patients Co-infected with HIV and HBV</b> .....	10

<b>8</b>	<b>ADVERSE REACTIONS</b> .....	<b>11</b>
	8.1 Adverse Reaction Overview .....	11
	8.2 Clinical Trial Adverse Reactions.....	11
	<b>8.2.1 Clinical Trial Adverse Reactions – Pediatrics</b> .....	<b>13</b>
	8.3 Less Common Clinical Trial Adverse Reactions.....	13
	8.4 Abnormal Laboratory Findings: Hematologic, Clinical Chemistry and Other Quantitative Data.....	14
	8.5 Post-Market Adverse Reactions.....	15
<b>9</b>	<b>DRUG INTERACTIONS</b> .....	<b>16</b>
	9.1 Serious Drug Interactions .....	16
	9.2 Drug Interactions Overview.....	16
	9.3 Drug-Behavioural Interactions.....	17
	9.4 Drug-Drug Interactions.....	18
	9.5 Drug-Food Interactions .....	24
	9.6 Drug-Herb Interactions.....	24
	9.7 Drug-Laboratory Test Interactions.....	24
<b>10</b>	<b>CLINICAL PHARMACOLOGY</b> .....	<b>24</b>
	10.1 Mechanism of Action.....	24
	10.2 Pharmacodynamics.....	25
	10.3 Pharmacokinetics.....	26
<b>11</b>	<b>STORAGE, STABILITY AND DISPOSAL</b> .....	<b>29</b>
<b>12</b>	<b>SPECIAL HANDLING INSTRUCTIONS</b> .....	<b>29</b>
	<b>PART II: SCIENTIFIC INFORMATION</b> .....	<b>30</b>
<b>13</b>	<b>PHARMACEUTICAL INFORMATION</b> .....	<b>30</b>
<b>14</b>	<b>CLINICAL TRIALS</b> .....	<b>32</b>
	14.1 Trial Design and Study Demographics .....	33
	14.2 Study Results .....	39
<b>15</b>	<b>MICROBIOLOGY</b> .....	<b>44</b>
<b>16</b>	<b>NON-CLINICAL TOXICOLOGY</b> .....	<b>46</b>
<b>17</b>	<b>SUPPORTING PRODUCT MONOGRAPHS</b> .....	<b>47</b>
	<b>PATIENT MEDICATION INFORMATION</b> .....	<b>48</b>

## PART I: HEALTH PROFESSIONAL INFORMATION

### 1 INDICATIONS

BIKTARVY (bictegravir/emtricitabine/tenofovir alafenamide) is indicated as a complete regimen for the treatment of human immunodeficiency virus-1 (HIV-1) infection in adults and pediatric patients weighing  $\geq 25$  kg with no known substitution associated with resistance to the individual components of BIKTARVY.

#### 1.1 Pediatrics

**Pediatrics (weighing  $\geq 25$  kg):** The safety and efficacy in pediatric patients weighing  $\geq 25$  kg are based on data from an open-label clinical study (see **8 ADVERSE REACTIONS** and **14 CLINICAL TRIALS**).

Safety and efficacy of BIKTARVY in children weighing  $< 25$  kg have not been established.

#### 1.2 Geriatrics

**Geriatrics ( $\geq 65$  years of age):** No differences in safety or efficacy have been observed between elderly patients and adult patients  $< 65$  years of age (see **8 ADVERSE REACTIONS** and **14 CLINICAL TRIALS**).

### 2 CONTRAINDICATIONS

BIKTARVY is contraindicated in patients who are hypersensitive to bictegravir (BIC), emtricitabine (FTC), tenofovir alafenamide (TAF) or to any ingredient in the formulation or component of the container. For a complete listing, see **6 DOSAGE FORMS, STRENGTHS, COMPOSITION AND PACKAGING**.

Coadministration of BIKTARVY is contraindicated with:

- dofetilide\* due to the potential for increased dofetilide plasma concentrations and associated serious and/or life-threatening events (see **9 DRUG INTERACTIONS**).
- rifampin due to decreased BIC plasma concentrations, which may result in the loss of therapeutic effect and development of resistance to BIKTARVY (see **9 DRUG INTERACTIONS**).
- St. John's wort due to the effect of St. John's wort on the BIC component of BIKTARVY. This may result in loss of therapeutic effect and development of resistance (see **9 DRUG INTERACTIONS**).

\*Product not marketed in Canada

### 3 SERIOUS WARNINGS AND PRECAUTIONS BOX

#### Serious Warnings and Precautions

- **Post-treatment Exacerbation of Hepatitis B**

Severe acute exacerbations of hepatitis B have been reported in patients who are coinfecting with HIV-1 and HBV and have discontinued products containing FTC and/or tenofovir disoproxil fumarate (TDF), and may occur with discontinuation of BIKTARVY. Hepatic function should be monitored closely with both clinical and laboratory follow-up for at least several months in patients who are coinfecting with HIV-1 and HBV and discontinue BIKTARVY. If appropriate, anti-hepatitis B therapy may be warranted (see **7 WARNINGS AND PRECAUTIONS, 7.1 Special Populations**).

### 4 DOSAGE AND ADMINISTRATION

#### 4.1 Dosing Considerations

BIKTARVY is a three-drug fixed dose combination product containing 50 mg of BIC, 200 mg of FTC, and 25 mg of TAF.

#### Testing

Prior to or when initiating BIKTARVY, test for hepatitis B virus infection.

Prior to or when initiating BIKTARVY, and during treatment with BIKTARVY, assess serum creatinine, estimated creatinine clearance (CrCl), urine glucose, and urine protein in all patients as clinically appropriate. In patients with chronic kidney disease, also assess serum phosphorus.

#### 4.2 Recommended Dose and Dosage Adjustment

##### Adults and Pediatric Patients weighing $\geq 25$ kg

The recommended dose of BIKTARVY is one tablet taken orally once daily with or without food.

##### Pediatrics (weighing $< 25$ kg)

BIKTARVY is not indicated for use in pediatric patients weighing  $< 25$  kg

##### Geriatrics ( $\geq 65$ years of age)

No dose adjustment of BIKTARVY is required for elderly patients. No differences in safety or efficacy have been observed between elderly patients and those  $< 65$  years of age.

##### Renal Impairment

No dose adjustment of BIKTARVY is required in adult patients with estimated CrCl  $\geq 30$  mL/minute or in adult patients with end stage renal disease (ESRD; estimated CrCl  $< 15$  mL/minute) who are receiving chronic hemodialysis. On days of hemodialysis, administer the daily dose of BIKTARVY after completion of hemodialysis treatment. BIKTARVY is not recommended in patients with estimated CrCl  $\geq 15$  and  $< 30$  mL per minute, or  $< 15$  mL/minute who are not receiving chronic hemodialysis, as the safety of BIKTARVY has not been

established in these populations.

No data are available to make dose recommendations in pediatric patients with renal impairment.

### **Hepatic Impairment**

BIKTARVY is not recommended in patients with severe hepatic impairment (Child-Pugh Class C) because it has not been studied in these patients. No dose adjustment of BIKTARVY is required in patients with mild (Child-Pugh Class A) or moderate (Child-Pugh Class B) hepatic impairment (see **10 CLINICAL PHARMACOLOGY, Pharmacokinetics, Special Populations and Conditions**).

### **4.3 Administration**

The recommended dose of BIKTARVY is one tablet taken orally once daily with or without food in adults and pediatric patients weighing  $\geq 25$  kg.

### **4.4 Missed Dose**

If a patient misses a dose of BIKTARVY within 18 hours of the time it is usually taken, the patient should take BIKTARVY as soon as possible, and then take the next dose of BIKTARVY at the regularly scheduled time. If a patient misses a dose of BIKTARVY by more than 18 hours, the patient should not take the missed dose and simply resume the usual dosing schedule.

## **5 OVERDOSAGE**

No data are available on overdose of BIKTARVY in patients. If overdose occurs, the patient must be monitored for evidence of toxicity. Treatment of overdose with BIKTARVY consists of general supportive measures including monitoring of vital signs as well as observation of the clinical status of the patient.

There is no specific antidote for overdose with BIKTARVY. As BIC is highly bound to plasma proteins, it is unlikely that it will be significantly removed by hemodialysis or peritoneal dialysis. FTC can be removed by hemodialysis, which removes approximately 30% of the FTC dose over a 3 hour dialysis period starting within 1.5 hours of FTC dosing. It is not known whether FTC can be removed by peritoneal dialysis.

Tenofovir is efficiently removed by hemodialysis with an extraction coefficient of approximately 54%.

For management of a suspected drug overdose, contact your regional poison control centre.

## 6 DOSAGE FORMS, STRENGTHS, COMPOSITION AND PACKAGING

**Table 1 Dosage Forms, Strengths, Composition and Packaging**

<b>Route of Administration</b>	<b>Dosage Form / Strength / Composition</b>	<b>Non-medicinal Ingredients</b>
Oral	Each tablet contains 50 mg of BIC (equivalent to 52.5 mg of bictegrovir sodium), 200 mg of FTC, and 25 mg of TAF (equivalent to 28.0 mg of tenofovir alafenamide hemifumarate).	Croscarmellose Sodium, Iron Oxide Black, Iron Oxide Red, Magnesium Stearate, Microcrystalline Cellulose, Polyethylene Glycol, Polyvinyl Alcohol, Talc, Titanium-Dioxide

BIKTARVY tablets are purplish brown, capsule-shaped, film-coated, and debossed with “GSI” on one side and “9883” on the other side.

BIKTARVY tablets are packaged in white, high density polyethylene (HDPE) bottles and enclosed with a polypropylene continuous thread child resistant cap, lined with an induction activated aluminum foil liner. Each bottle contains 7 or 30 tablets, silica gel desiccant, and polyester coil.

BIKTARVY tablets are also packaged in blister packaging which consists of a clear laminated blister film sealed to an aluminum lidding material. Each individual blister cavity contains a tablet and a die-cut desiccant film (Activ-Film™), which is heat staked to the lidding material. Each blister card is fitted between 2 paperboard cards, which are sealed together. There are 4 blister cards containing 7 tablets and 1 card containing 2 tablets placed inside a paperboard carton for a total of 30 tablets per pack.

## 7 WARNINGS AND PRECAUTIONS

Please see the **3 SERIOUS WARNINGS AND PRECAUTIONS BOX**.

### General

BIKTARVY should not be coadministered with any other antiretroviral products including products containing BIC, FTC, or TAF (ATRIPLA<sup>®</sup>, COMPLERA<sup>®</sup>, DESCOVY<sup>®</sup>, EMTRIVA<sup>®</sup>, GENVOYA<sup>®</sup>, ODEFSEY<sup>®</sup>, Symtuza<sup>™</sup>, STRIBILD<sup>®</sup>, TRUVADA<sup>®</sup>, VEMLIDY<sup>®</sup>); or with products containing lamivudine or tenofovir disoproxil fumarate (3TC<sup>®</sup>, ATRIPLA, Combivir<sup>®</sup>, COMPLERA, Delstrigo<sup>®</sup>, Dovato<sup>®</sup>, Heptovir<sup>®</sup>, Kivexa<sup>®</sup>, STRIBILD, Triumeq<sup>®</sup>, Trizivir<sup>®</sup>, TRUVADA, VIREAD<sup>®</sup>). BIKTARVY should not be administered with adefovir dipivoxil (HEPSERA<sup>®</sup>).

The safety and efficacy of BIKTARVY have not been established in patients who have failed treatment with an antiretroviral therapy regimen and are currently not virologically suppressed.

### Driving and Operating Machinery

No studies on the effects of BIKTARVY on the ability to drive and use machines have been performed.

### Endocrine and Metabolism

#### ***Serum Lipids and Blood Glucose***

Serum lipid and blood glucose levels may increase during antiretroviral therapy (ART). Disease control and life style changes may also be contributing factors. Consideration should be given to the measurement of serum lipids and blood glucose. Lipid disorders and blood glucose elevations should be managed as clinically appropriate.

### Hepatic/Biliary/Pancreatic

#### ***Lactic acidosis and severe hepatomegaly with steatosis***

Lactic acidosis and severe hepatomegaly with steatosis, including fatal cases, have been reported with the use of antiretroviral nucleoside analogs, including FTC, a component of BIKTARVY, and TDF, another prodrug of tenofovir, alone or in combination with other antiretrovirals. Treatment with BIKTARVY should be suspended in any patient who develops clinical or laboratory findings suggestive of lactic acidosis or pronounced hepatotoxicity (which may include hepatomegaly and steatosis even in the absence of marked transaminase elevations).

#### ***Hepatic Impairment***

Patients with chronic hepatitis B or C and treated with antiretroviral therapy are at increased risk for severe hepatic adverse events (see **7 WARNINGS AND PRECAUTIONS, 7.1 Special Populations**).

### Immune

#### ***Immune Reconstitution Inflammatory Syndrome***

Immune reconstitution inflammatory syndrome has been reported in patients treated with combination antiretroviral therapy, including FTC, a component of BIKTARVY. During the initial



phase of combination antiretroviral treatment, patients whose immune system responds may develop an inflammatory response to indolent or residual opportunistic infections [such as *Mycobacterium avium* infection, cytomegalovirus, *Pneumocystis jirovecii* pneumonia (PCP), or tuberculosis], which may necessitate further evaluation and treatment.

Autoimmune disorders (such as Graves' disease, polymyositis, Guillain-Barré syndrome, and autoimmune hepatitis) have also been reported to occur in the setting of immune reconstitution; however, the reported time to onset is more variable, and can occur many months after initiation of treatment.

## Renal

### **Renal impairment**

Renal impairment, including cases of acute renal failure and Fanconi syndrome (renal tubular injury with severe hypophosphatemia), has been reported with the use of tenofovir prodrugs in both animal toxicology studies and human trials. In clinical trials with BIKTARVY, there have been no cases of Fanconi syndrome or proximal renal tubulopathy (PRT).

Patients taking tenofovir prodrugs who have impaired renal function and those taking nephrotoxic agents including non-steroidal anti-inflammatory drugs are at increased risk of developing renal-related adverse reactions.

BIKTARVY is not recommended in patients with estimated CrCl  $\geq 15$  and  $< 30$  mL/min, or in patients with estimated CrCl  $< 15$  mL/min who are not receiving chronic hemodialysis.

## 7.1 Special Populations

### 7.1.1 Pregnant Women

There are no adequate and well controlled studies of BIKTARVY or its components in pregnant women. Dolutegravir (DTG), another integrase inhibitor, has been associated with neural tube defects (NTDs). There are insufficient human data on the use of BIKTARVY during pregnancy to inform a drug-associated risk of birth defects and miscarriage. BIKTARVY should not be used during pregnancy unless the potential benefits outweigh the potential risks to the fetus.

### **Bictegravir**

Data from an observational study in Botswana showed that DTG, another integrase inhibitor, was associated with increased risk of neural tube defects when administered at the time of conception and in early pregnancy. Data available to date from other sources including the Antiretroviral Pregnancy Registry (APR), clinical trials, and postmarketing data are insufficient to address this risk with BIC.

Embryo-fetal development toxicity studies of BIC conducted in pregnant rats and rabbits revealed no evidence of adverse developmental effects at maternal exposures that were approximately 36 and 0.6 times, respectively, the human exposure at the recommended human dose. In rabbits, abortions and decreased fetal body weight were noted at maternally toxic exposures that were approximately 1.4 times the human exposure at the recommended human dose.

### **Emtricitabine**

Reproductive studies were conducted in rats, mice, and rabbits. Animal studies (performed at 60- to 120-fold human exposure) did not indicate harmful effects of FTC with respect to fertility, pregnancy, fetal parameters, parturition or postnatal development.

### **Tenofovir Alafenamide**

Embryonic fetal development studies performed in rats and rabbits revealed no evidence of impaired fertility or harm to the fetus. The embryo-fetal NOAELs in rats and rabbits occurred at TAF exposures approximately 2 and 78 times higher than, respectively, the exposure in humans at the recommended daily dose of BIKTARVY. TAF is rapidly converted to tenofovir; the observed tenofovir exposure in rats and rabbits were 55 and 86 times higher, respectively, than human tenofovir exposures at the recommended human dose.

Antiretroviral Pregnancy Registry: To monitor maternal-fetal outcomes of pregnant women exposed to ART (antiretroviral therapy), including BIKTARVY, an Antiretroviral Pregnancy Registry has been established. Healthcare providers are encouraged to register patients:

<http://www.apregistry.com>

Telephone: (800) 258-4263

Fax: (800) 800-1052

#### **7.1.2 Breast-feeding**

In animal studies, BIC was detected in the plasma of nursing rat pups likely due to the presence of BIC in milk, without effects on nursing pups. In animal studies, it has been shown that tenofovir is secreted into milk. It is not known whether BIC or TAF are secreted in human milk. In humans, samples of breast milk obtained from five HIV-1 infected mothers given TRUVADA (FTC/TDF) show that FTC is secreted in human milk at estimated neonatal concentrations 3 to 12 times higher than the FTC IC<sub>50</sub> but 3 to 12 times lower than the C<sub>min</sub> achieved from oral administration of FTC. Breastfeeding infants whose mothers are being treated with FTC may be at risk for developing viral resistance to FTC. Other FTC-associated risks in infants breastfed by mothers being treated with FTC are unknown.

#### **7.1.3 Pediatrics**

Safety and effectiveness of BIKTARVY in pediatric patients weighing < 25 kg have not been established.

#### **7.1.4 Geriatrics**

Clinical studies included 111 patients aged 65 years and over who received BIKTARVY. No differences in safety or efficacy have been observed between elderly patients and those less than 65 years of age.

#### **7.1.5 Patients Co-infected with HIV and HBV**

Prior to or when initiating BIKTARVY, test for hepatitis B virus infection (see **4 DOSAGE AND ADMINISTRATION**).

Severe acute exacerbations of hepatitis B have been reported in patients who are coinfecting with HIV-1 and HBV and have discontinued products containing FTC and/or TDF, and may occur with discontinuation of BIKTARVY. Therefore, patients co-infected with HIV-1 and HBV who discontinue BIKTARVY should be closely monitored with both clinical and laboratory follow-up for at least several months after stopping treatment. If appropriate, anti-hepatitis B therapy may be warranted, especially in HBV co-infected patients with advanced liver disease or cirrhosis since post-treatment exacerbation of hepatitis may lead to hepatic decompensation.

## 8 ADVERSE REACTIONS

### 8.1 Adverse Reaction Overview

The following adverse drug reactions are discussed in other sections of the labeling:

- Severe Acute Exacerbations of Hepatitis B (See **3 SERIOUS WARNINGS AND PRECAUTIONS BOX**)
- Immune Reconstitution Inflammatory Syndrome (See **7 WARNINGS AND PRECAUTIONS**)
- Lactic Acidosis/Severe Hepatomegaly with Steatosis (See **7 WARNINGS AND PRECAUTIONS**)

### 8.2 Clinical Trial Adverse Reactions

Clinical trials are conducted under very specific conditions. The adverse reaction rates observed in the clinical trials; therefore, may not reflect the rates observed in practice and should not be compared to the rates in the clinical trials of another drug. Adverse reaction information from clinical trials may be useful in identifying and approximating rates of adverse drug reactions in real-world use.

#### Clinical Trials in Treatment-Naïve Adults

The primary safety assessment of BIKTARVY was based on Weeks 48, 96, and 144 pooled data from 1274 patients in two randomized, double-blind, active-controlled trials, Study 1489 and Study 1490, in antiretroviral treatment-naïve HIV-1 infected adult patients. A total of 634 patients received one tablet of BIKTARVY once daily (See **14 CLINICAL TRIALS**).

The most common adverse reactions (all Grades) reported in at least 5% of patients in the BIKTARVY group in Study 1489 were diarrhea, nausea, and headache. No adverse reactions were reported in at least 5% in the BIKTARVY group in Study 1490. The proportion of patients who discontinued treatment with BIKTARVY, abacavir [ABC]/DTG/lamivudine [3TC]), or DTG + FTC/TAF, due to adverse events, regardless of severity, was 0.9%, 1.6%, and 1.8% through Week 144, respectively. Table 2 and Table 3 display the frequency of adverse reactions (all Grades) greater than or equal to 2% in the BIKTARVY group in Study 1489 and Study 1490, respectively. The safety profile of BIKTARVY was consistent through Week 144 in both studies.

**Table 2 Adverse Reactions<sup>a</sup> (All Grades) Reported in ≥ 2% of HIV-1 Infected Treatment-Naïve Adults Receiving BIKTARVY in Study 1489 (Week 48 and 144 analysis)**

Adverse Reactions	Week 48		Week 144	
	BIKTARVY N=314 (%)	ABC/DTG/3TC N=315 (%)	BIKTARVY N=314 (%)	ABC/DTG/3TC N=315 (%)
GASTROINTESTINAL DISORDERS				
Diarrhea	6	4	6	4
Nausea	5	17	6	18
GENERAL DISORDERS AND ADMINISTRATION SITE CONDITIONS				
Fatigue	3	3	3	3
NERVOUS SYSTEM DISORDERS				
Headache	5	5	5	5
Dizziness	2	3	2	3
PSYCHIATRIC DISORDERS				
Insomnia	2	3	2	3
Abnormal dreams	3	3	3	3

a. Frequencies of adverse reactions are based on all adverse events attributed to study drugs by the investigator. No adverse reactions of Grade 2 or higher occurred in ≥1% of patients treated with BIKTARVY in Study 1489.

**Table 3 Adverse Reactions<sup>a</sup> (All Grades) Reported in ≥ 2% of HIV-1 Infected Treatment-Naïve Adults Receiving BIKTARVY in Study 1490 (Week 48 and 144 analysis)**

Adverse Reactions	Week 48		Week 144	
	BIKTARVY N=320 (%)	DTG + FTC/TAF N=325 (%)	BIKTARVY N=320 (%)	DTG + FTC/TAF N=325 (%)
GASTROINTESTINAL DISORDERS				
Diarrhea	3	3	3	3
Nausea	3	5	3	5
GENERAL DISORDERS AND ADMINISTRATION SITE CONDITIONS				
Fatigue	2	2	2	2
NERVOUS SYSTEM DISORDERS				
Headache	4	3	4	3
Dizziness	2	1	2	1
PSYCHIATRIC DISORDERS				
Insomnia	2	<1	2	<1

- a. Frequencies of adverse reactions are based on all adverse events attributed to study drugs by the investigator. No adverse reactions of Grade 2 or higher occurred in  $\geq 1\%$  of patients treated with BIKTARVY in Study 1490.

### **Clinical Trials in Virologically Suppressed Adults**

The safety of BIKTARVY in virologically suppressed adults was based on Week 48 data from 282 patients in a randomized, double-blind, active-controlled trial (Study 1844) in which virologically suppressed patients were switched from either DTG + ABC/3TC or ABC/DTG/3TC to BIKTARVY; and Week 48 data from 290 patients in an open-label, active-controlled trial in which virologically suppressed patients were switched from a regimen containing atazanavir (ATV) (given with cobicistat or ritonavir) or darunavir (DRV) (given with cobicistat or ritonavir) plus either FTC/TDF or ABC/3TC, to BIKTARVY (Study 1878). Overall, the safety profile in virologically suppressed adult patients in Studies 1844 and 1878 was similar to that in treatment-naïve patients.

### **Clinical Trials in Adults with Renal Impairment**

The safety of FTC + TAF (components of BIKTARVY) was evaluated in a single arm, open-label clinical trial (GS-US-292-1825 [Study 1825]), in which 55 virologically-suppressed HIV-1 infected patients with ESRD (eGFR by Cockcroft-Gault method  $< 15$  mL/min) on chronic hemodialysis received FTC+TAF in combination with elvitegravir (EVG) + cobicistat (COBI) as a fixed-dose combination tablet for 96 weeks. In an extension phase of Study 1825, 10 patients switched to BIKTARVY for 48 weeks. The safety profile of FTC + TAF in patients with ESRD on chronic hemodialysis was similar to that in patients with normal renal function, and no additional adverse reactions were identified in patients administered BIKTARVY in this study.

### **Clinical Trials in Geriatric Patients ( $\geq 65$ years of age)**

The safety of switching from a stable antiretroviral regimen to BIKTARVY was evaluated in an open-label, single arm trial of virologically suppressed HIV-1 infected adults aged 65 years and over (N=86), Study GS-US-380-4449 (Study 4449). No additional adverse drug reactions were identified through Week 48 in virologically suppressed patients aged  $\geq 65$  years administered BIKTARVY in this study.

### **Adverse Reactions from Clinical Trials of the Components of BIKTARVY**

For information on the safety profiles of FTC or TAF, consult the Product Monographs for EMTRIVA<sup>®</sup>, VEMLIDY<sup>®</sup> or DESCOVY<sup>®</sup>.

#### **8.2.1 Clinical Trial Adverse Reactions – Pediatrics**

The safety of BIKTARVY was evaluated in 50 HIV-1 infected virologically suppressed patients between the ages of 12 to  $< 18$  years (weighing  $\geq 35$  kg) through Week 48 and in 50 virologically suppressed patients between the ages of 6 to  $< 12$  years (weighing  $\geq 25$  kg) through Week 24 in an open label clinical study, GS-US-380-1474 (Study 1474). In Study 1474, the safety profile of BIKTARVY was similar to that in adults. Adverse reactions were reported in 10% of pediatric patients. No Grade 3 or 4 adverse reactions were reported. One patient (1%) had Grade 2 adverse reactions of insomnia and anxiety that led to discontinuation of BIKTARVY. The other adverse reactions that occurred in single patients were similar to those seen in adults.

#### **8.3 Less Common Clinical Trial Adverse Reactions**

Additional adverse reactions (all Grades) occurring in less than 2% of patients administered

BIKTARVY in Studies 1489 and 1490:

Gastrointestinal disorders: abdominal pain, dyspepsia, flatulence, vomiting

Psychiatric Disorders: depression

Skin and subcutaneous tissue disorders: rash

Suicidal ideation or suicide attempt (in patients with a pre-existing history of depression or psychiatric illness) occurred in < 1% of patients administered BIKTARVY.

The majority of adverse reactions were Grade 1.

#### 8.4 Abnormal Laboratory Findings: Hematologic, Clinical Chemistry and Other Quantitative Data

##### Clinical Trial Findings

The frequency of laboratory abnormalities (Grades 3–4) occurring in at least 2% of patients receiving BIKTARVY in Studies 1489 and 1490 are presented in Table 4 and Table 5, respectively.

**Table 4 Laboratory Abnormalities (Grades 3–4) Reported in ≥ 2% of Patients Receiving BIKTARVY in Study 1489 (Week 48 and 144 analysis)**

Laboratory Parameter Abnormality <sup>a</sup>	Week 48		Week 144	
	BIKTARVY N=314 (%)	ABC/DTG/3TC N=315 (%)	BIKTARVY N=314 (%)	ABC/DTG/3TC N=315 (%)
Amylase (>2.0 x ULN)	2	2	3	4
ALT (>5.0 x ULN)	1	1	2	2
AST (>5.0 x ULN)	2	1	5	3
Creatine Kinase (≥10.0 x ULN)	4	3	8	8
Neutrophils (<750 mm <sup>3</sup> )	2	3	3	4
LDL-cholesterol (fasted) (>190 mg/dL)	2	3	4	5

ULN = Upper limit of normal

a. Frequencies are based on treatment-emergent laboratory abnormalities.

**Table 5 Laboratory Abnormalities (Grades 3–4) Reported in ≥ 2% of Patients Receiving BIKTARVY in Study 1490 (Week 48 and 144 analysis)**

Laboratory Parameter Abnormality <sup>a</sup>	Week 48		Week 144	
	BIKTARVY N=320 (%)	DTG + FTC/TAF N=325 (%)	BIKTARVY N=320 (%)	DTG + FTC/TAF N=325 (%)
Amylase (>2.0 x ULN)	2	2	3	4
ALT (>5.0 x ULN)	2	1	3	1
AST (>5.0 x ULN)	1	3	2	3
Creatine Kinase (≥10.0 x ULN)	4	2	6	4
Neutrophils (<750 mm <sup>3</sup> )	2	1	3	2
LDL-cholesterol (fasted) (>190 mg/dL)	3	4	4	6

ULN = Upper limit of normal

a. Frequencies are based on treatment-emergent laboratory abnormalities.

**Changes in Serum Creatinine:** Bictegrovir has been shown to increase serum creatinine due to inhibition of tubular secretion of creatinine without affecting renal glomerular function (see **10 CLINICAL PHARMACOLOGY**). Increases in serum creatinine occurred by Week 4 of treatment and remained stable through Week 144. In Studies 1489 and 1490, median (Q1, Q3) serum creatinine increased by 0.11 (0.03, 0.19) mg per dL, 0.11 (0.04, 0.19) mg per dL, and 0.12 (0.06, 0.21) mg per dL from baseline to Week 144 in the BIKTARVY, ABC/DTG/3TC, and DTG+FTC/TAF groups, respectively. There were no discontinuations due to renal adverse events through Week 144 in patients administered BIKTARVY in clinical studies.

**Changes in Bilirubin:** In Studies 1489 and 1490, total bilirubin increases were observed in 17% of patients administered BIKTARVY through Week 144. Increases were primarily Grade 1 (12%) and Grade 2 (4%) (≥1.0 to 2.5 x ULN) and were not associated with hepatic adverse reactions or other liver related laboratory abnormalities. Five patients administered BIKTARVY (1%) had Grade 3 bilirubin increases that were not considered related to study drug. There were no discontinuations due to hepatic adverse events through Week 144 in BIKTARVY clinical studies.

## 8.5 Post-Market Adverse Reactions

In addition to the adverse reaction reports from clinical trials, the following possible adverse reactions have been identified during post-approval use of BIKTARVY or products containing FTC or TAF. Because these events have been reported voluntarily from a population of unknown size, estimates of frequency cannot be made. These events have been considered possible adverse reactions due to a combination of their seriousness, frequency of reporting or potential causal relationship with treatment. No additional adverse reactions have been identified during post-approval use of other components of BIKTARVY.

## BIKTARVY (BIC/FTC/TAF)

*Skin and subcutaneous tissue disorders:* Stevens-Johnson syndrome/toxic epidermal necrolysis

### Emtricitabine

The following adverse experiences have been reported in post-marketing experience without regard to causality; some events represent a single report.

*Blood and lymphatic system disorders:* Thrombocytopenia

*Gastrointestinal disorders:* Pancreatitis

*General disorders and administrative site conditions:* Pyrexia

*Metabolism and nutrition disorders:* Lactic acidosis

### Tenofovir Alafenamide

*Skin and subcutaneous tissue disorders:* Angioedema, urticaria

## 9 DRUG INTERACTIONS

### 9.1 Serious Drug Interactions

#### Serious Drug Interactions

Coadministration of BIKTARVY is contraindicated with:

- Dofetilide\* due to the potential for increased dofetilide plasma concentrations and associated serious and/or life-threatening events (see **9.4 Drug-Drug Interactions**)
- Rifampin due to decreased bicittegravir plasma concentrations, which may result in the loss of therapeutic effect and development of resistance of BIKTARVY (see **9.4 Drug-Drug Interactions**)
- St. John's wort due to the effect of St. John's wort on the bicittegravir component of BIKTARVY which may result in loss of therapeutic effect and development of resistance (see **9.4 Drug-Drug Interactions**).

\*Product not marketed in Canada

### 9.2 Drug Interactions Overview

The drug interactions described in Table 6 are based on studies conducted with BIKTARVY, or the components of BIKTARVY (BIC, FTC, or TAF) as individual components and/or in combination, or are potential drug interactions that may occur with BIKTARVY. The table is not



comprehensive.

### **Potential for BIKTARVY to Affect Other Drugs**

Bictegravir inhibits organic cation transporter 2 (OCT2) and multidrug and toxin extrusion transporter 1 (MATE1) *in vitro*. Coadministration of BIKTARVY with the OCT2 and MATE1 substrate metformin did not result in a clinically significant increase in metformin exposure. BIKTARVY may be coadministered with substrates of OCT2 and MATE1 except dofetilide\*, which is contraindicated due to the potential for increased dofetilide plasma concentrations and associated serious and/or life-threatening events (see **2 CONTRAINDICATIONS**).

\*Product not marketed in Canada

Bictegravir is not an inhibitor or inducer of CYP3A *in vivo*.

#### ***Emtricitabine***

*In vitro* and clinical pharmacokinetic drug-drug interaction studies have shown that the potential for CYP-mediated interactions involving FTC with other medicinal products is low.

FTC is primarily excreted by the kidneys by a combination of glomerular filtration and active tubular secretion. No drug-drug interactions due to competition for renal excretion have been observed; however, coadministration of FTC with drugs that are eliminated by active tubular secretion may increase concentrations of FTC, and/or the coadministered drug.

Drugs that decrease renal function may increase concentrations of FTC.

#### ***Tenofovir Alafenamide***

TAF is a substrate of P-gp and BCRP. Drugs that strongly affect P-gp and BCRP activity may lead to changes in TAF absorption.

TAF is not an inhibitor or inducer of CYP3A *in vivo*.

### **Potential for Other Drugs to Affect One or More Components of BIKTARVY**

Bictegravir, a component of BIKTARVY, is a substrate of CYP3A and UGT1A1. Coadministration of BIC and drugs that potently induce both CYP3A and UGT1A1 may significantly decrease plasma concentrations of BIC, which may result in loss of therapeutic effect of BIKTARVY and development of resistance. Coadministration of BIC with drugs that potently inhibit both CYP3A and UGT1A1 may significantly increase plasma concentrations of BIC.

TAF, a component of BIKTARVY, is a substrate of P-gp and BCRP. Drugs that strongly affect P-gp and BCRP activity may lead to changes in TAF absorption (see Table 6). Drugs that induce P-gp activity are expected to decrease the absorption of TAF, resulting in decreased plasma concentration of TAF, which may lead to loss of therapeutic effect of BIKTARVY and development of resistance. Coadministration of BIKTARVY with other drugs that inhibit P-gp and BCRP may increase the absorption and plasma concentration of TAF (see Table 9).

## **9.3 Drug-Behavioural Interactions**

Interactions of BIKTARVY with individual behavioural risks have not been established.

## 9.4 Drug-Drug Interactions

Drug-drug interaction studies were conducted with BIKTARVY or various combinations of the components of BIKTARVY (BIC, FTC or TAF).

BIKTARVY should not be coadministered with atazanavir due to a potential drug interaction. As BIKTARVY is a complete regimen, comprehensive information regarding drug-drug interactions with other antiretrovirals agents is not provided.

Drug interaction information for BIKTARVY with potential concomitant drugs is summarized in Table 6. The drug interactions described are based on studies conducted with either BIKTARVY, the components of BIKTARVY (BIC, FTC, and TAF) as individual agents, or are predicted drug interactions that may occur with BIKTARVY. For contraindicated drugs, see **2 CONTRAINDICATIONS**. For magnitude of interaction, see **Drug Interaction Studies**.

The table is not all-inclusive.

**Table 6 Established or Potential<sup>a</sup> Drug-Drug Interactions**

<b>Concomitant Drug Class: Drug Name</b>	<b>Effect on Concentration<sup>b</sup></b>	<b>Clinical Comment</b>
<b>Anticonvulsants:</b> carbamazepine <sup>c</sup> oxcarbazepine phenobarbital phenytoin	↓ BIC ↓ TAF	Coadministration of carbamazepine, oxcarbazepine, phenobarbital, or phenytoin may decrease BIC and TAF plasma concentrations, which may result in loss of therapeutic effect and development of resistance. Therefore, it is not recommended. Alternative anticonvulsants should be considered.
<b>Antimycobacterials:</b> rifabutin <sup>c</sup> rifampin <sup>c,d</sup> rifapentine	↓ BIC ↓ TAF	Coadministration of rifabutin, rifampin, or rifapentine may decrease BIC and TAF plasma concentrations, which may result in loss of therapeutic effect and development of resistance. Coadministration of BIKTARVY with rifampin is contraindicated due to the effect of rifampin on the BIC component of BIKTARVY (see <b>2 CONTRAINDICATIONS</b> ).  Coadministration of BIKTARVY with rifabutin or rifapentine is not recommended.
<b>HIV-1 Antiviral Agent:</b> atazanavir <sup>c,e</sup>	↑ BIC	Coadministration of BIKTARVY with atazanavir is not recommended.
<b>Herbal Products:</b> St. John's wort ( <i>Hypericum perforatum</i> )	↓ BIC ↓ TAF	Coadministration of BIKTARVY with St. John's wort is contraindicated.
<b>Medications or oral supplements containing polyvalent cations (e.g. Mg, Al, Ca, Fe):</b> Calcium or iron supplements <sup>c</sup> Cation-containing antacids or laxatives <sup>c</sup> Sucralfate Buffered medications	↓ BIC	Administer BIKTARVY 2 hours before or 2 hours after taking medications or oral supplements containing polyvalent cations. Alternatively, BIKTARVY and medications or oral supplements containing polyvalent cations can be taken together with food.

- a. Table is not all inclusive
- b. ↑ = increase, ↓ = decrease
- c. Drug-drug interaction study was conducted.
- d. Potent inducer of both CYP3A and UGT1A1.
- e. Potent inhibitor of both CYP3A and UGT1A1.

## **Drug Interaction Studies**

Drug-drug interaction studies were conducted with BIKTARVY or various combinations of BIKTARVY components (BIC, FTC or TAF).

The effects of coadministered drugs on the exposure of BIC are shown in Table 7 . The effects of coadministered drugs on the exposure of TAF are shown in Table 8. The effects of BIC and /or TAF on the exposure of coadministered drugs are shown in Table 9.

## **Drugs without Clinically Significant Interactions with BIKTARVY**

Based on drug interaction studies conducted with BIKTARVY or the components of BIKTARVY, no clinically significant drug interactions have been either observed or are expected when BIKTARVY is combined with the following drugs: amlodipine, atorvastatin, buprenorphine, drospirenone, ethinyl estradiol, famciclovir, famotidine, fluticasone, itraconazole, ketoconazole, ledipasvir/sofosbuvir, metformin, methadone, midazolam, naloxone, norbuprenorphine, norgestimate, omeprazole, sertraline, sofosbuvir, sofosbuvir/velpatasvir, and sofosbuvir/velpatasvir/voxilaprevir.

Table 7

**Drug Interactions: Changes in Pharmacokinetic Parameters for Bictegravir in the Presence of the Coadministered Drug<sup>a</sup>**

Coadministered Drug	Dose of Coadministered Drug (mg)	Bictegravir (mg)	N	Mean % Change of Bictegravir Pharmacokinetic Parameters (90% CI) <sup>b</sup>		
				C <sub>max</sub>	AUC	C <sub>min</sub>
Atazanavir <sup>c</sup> (fed)	300+150 cobicistat once daily	75 single dose	15	↔	↑ 306% (↑276%, ↑337%)	NA
Atazanavir <sup>d</sup> (fed)	400 once daily	75 single dose	15	↔	↑ 315% (↑281%, ↑351%)	NA
Darunavir <sup>e</sup> (fed)	800+150 cobicistat once daily	75 once daily	13	↑ 52% (↑40%, ↑64%)	↑ 74% (↑62%, ↑87%)	↑ 111% (↑95%, ↑129%)
Ledipasvir/ Sofosbuvir (fed)	90/400 once daily	75 once daily	30	↔	↔	↔
Rifabutin (fasted)	300 once daily	75 once daily	13	↓ 20% (↓33%, ↓3%)	↓ 38% (↓47%, ↓28%)	↓ 56% (↓63%, ↓48%)
Rifampin (fed)	600 once daily	75 single dose	15	↓ 28% (↓33%, ↓22%)	↓ 75% (↓78%, ↓73%)	NA
Sofosbuvir/ velpatasvir/ voxilaprevir (fed)	400/100/100+100 voxilaprevir <sup>f</sup> once daily	50 once daily	30	↔	↔	↔
Voriconazole <sup>e</sup> (fasted)	300 twice daily	75 single dose	15	↔	↑ 61% (↑41%, ↑84%)	NA
<b>Medications or Oral Supplements Containing Polyvalent Cations</b>						
Maximum strength antacid (simultaneous administration, fasted)	20 mL <sup>g</sup> single dose (oral)	50 single dose	14	↓ 80% (↓84%, ↓76%)	↓ 79% (↓82%, ↓74%)	NA
Maximum strength antacid (2 h after BIKTARVY fasted)	20 mL <sup>g</sup> single dose (oral)	50 single dose	13	↔	↔	NA
Maximum strength antacid (2 h before BIKTARVY fasted)	20 mL <sup>g</sup> single dose (oral)	50 single dose	13	↓ 58% (↓67%, ↓48%)	↓ 52% (↓62%, ↓41%)	NA
Maximum strength antacid (simultaneous administration, fed <sup>h</sup> )	20 mL <sup>g</sup> single dose (oral)	50 single dose	14	↓ 49% (↓57%, ↓38%)	↓ 47% (↓56%, ↓36%)	NA

Coadministered Drug	Dose of Coadministered Drug (mg)	Bictegravir (mg)	N	Mean % Change of Bictegravir Pharmacokinetic Parameters (90% CI) <sup>b</sup>		
				C <sub>max</sub>	AUC	C <sub>min</sub>
Calcium carbonate (simultaneous administration, fasted)	1200 single dose	50 single dose	14	↓ 42% (↓49%, ↓33%)	↓ 33% (↓43%, ↓22%)	NA
Calcium carbonate (simultaneous administration, fed <sup>h</sup> )	1200 single dose	50 single dose	14	↔	↔	NA
Ferrous fumarate (simultaneous administration, fasted)	324 single dose	50 single dose	14	↓ 71% (↓74%, ↓67%)	↓ 63% (↓67%, ↓58%)	NA
Ferrous fumarate (simultaneous administration, fed <sup>h</sup> )	324 single dose	50 single dose	14	↓ 25% (↓35%, ↓13%)	↔	NA

NA = Not Available / Not Applicable; 90% CIs of the GLSM ratio were within (↔), extended above (↑), or extended below (↓) the predetermined No Effect Boundaries.

- All interaction studies conducted in healthy volunteers.
- All No Effect Boundaries are 70% -143%.
- Evaluated as a potent inhibitor of CYP3A, UGT1A1, and an inhibitor of P-gp.
- Evaluated as a potent inhibitor of CYP3A and UGT1A1.
- Evaluated as a potent inhibitor of CYP3A.
- Study conducted with additional voxilaprevir 100 mg to achieve voxilaprevir exposures expected in HCV-infected patients.
- Maximum strength antacid contained 80 mg aluminum hydroxide, 80 mg magnesium hydroxide, and 8 mg simethicone, per mL.
- Reference treatment administered under fasted conditions.

**Table 8 Drug Interactions: Changes in Pharmacokinetic Parameters for Tenofovir Alafenamide in the Presence of the Coadministered Drug<sup>a</sup>**

Coadministered Drug	Dose of Coadministered Drug (mg)	Tenofovir Alafenamide (mg)	N	Mean % Change of Tenofovir Alafenamide Pharmacokinetic Parameters (90% CI) <sup>b</sup>		
				C <sub>max</sub>	AUC	C <sub>min</sub>
Carbamazepine	300 twice daily	25 single dose <sup>c</sup>	22	↓57% (↓64%, ↓49%)	↓54% (↓60%, ↓46%)	NA
Ledipasvir/sofosbuvir	90/400 once daily	25 once daily	30	↔	↔	NA
Sofosbuvir/velpastavir/voxilaprevir	400/100/100+100 voxilaprevir <sup>d</sup> once daily	25 once daily	30	↑28% (↑9%, ↑51%)	↑57% (↑44%, ↑71%)	NA

NA= Not Available / Not Applicable; 90% CIs of the GLSM ratio were within (↔), extended above (↑), or extended below (↓) the predetermined No Effect Boundaries

- All interaction studies conducted in healthy volunteers.
- All No Effect Boundaries are 70% -143% unless otherwise specified.
- Study conducted with DESCOVY (FTC/TAF).
- Study conducted with additional voxilaprevir 100 mg to achieve voxilaprevir exposures expected in HCV-infected patients.

Table 9

**Drug Interactions: Changes in Pharmacokinetic Parameters for Coadministered Drug in the Presence of the Individual Components of BIKTARVY<sup>a</sup>**

Coadministered Drug	Dose of Coadministered Drug (mg)	Bictegravir (mg)	Tenofovir Alafenamide (mg)	N	Mean % Change of Coadministered Drug Pharmacokinetic Parameters (90% CI) <sup>b</sup>		
					C <sub>max</sub>	AUC	C <sub>min</sub>
Ledipasvir	90/400 once daily	75 once daily	25 once daily	30	↔	↔	↔
Sofosbuvir					↔	↔	NA
GS-331007 <sup>c</sup>					↔	↔	↔
Metformin	500 twice daily	50 once daily	25 once daily	30	↔	↑39% (↑31%, ↑48%)	↑36% (↑21%, ↑53%)
Midazolam	2 single dose	50 once daily	25 once daily	14	↔	↔	NA
Norelgestromin	norgestimate 0.180/0.215/0.250 once daily / ethinyl estradiol 0.025 once daily	75 once daily	-	15	↔	↔	↔
Norgestrel					↔	↔	↔
Ethinyl estradiol					↔	↔	↔
Norelgestromin	norgestimate 0.180/0.215/0.250 once daily / ethinyl estradiol 0.025 once daily	-	25 once daily <sup>d</sup>	14	↔	↔	↔
Norgestrel					↔	↔	↔
Ethinyl estradiol					↔	↔	↔
Sertraline	50 single dose	-	10 once daily <sup>e</sup>	19	↔	↔	NA
Sofosbuvir	400//100/100 + 100 <sup>f</sup> once daily	50 once daily	25 once daily	30	↔	↔	NA
GS-331007 <sup>c</sup>					↔	↔	↔
Velpatasvir					↔	↔	↔
Voxilaprevir					↔	↔	↔

NA = Not Available / Not Applicable; 90% CIs of the GLSM ratio were within (↔), extended above (↑), or extended below (↓) the predetermined No Effect Boundaries

- a. All interaction studies conducted in healthy volunteers.
- b. All No Effect Boundaries are 70% -143% unless otherwise specified.
- c. The predominant circulating nucleoside metabolite of sofosbuvir.
- d. Study conducted with DESCOVY (FTC/TAF).
- e. Study conducted with GENVOYA (EVG/COBI/FTC/TAF).
- f. Study conducted with additional voxilaprevir 100 mg to achieve voxilaprevir exposures expected in HCV-infected patients.

## 9.5 Drug-Food Interactions

The effect of food on the components of the BIKTARVY was evaluated with a high (~800 calories, 50% from fat) or moderate fat (600 calories, 27% from fat) meal relative to fasted conditions.

Relative to fasting conditions, the administration of BIKTARVY with a moderate or high fat meal resulted in a 24% increase in BIC exposure. The alterations in mean systemic exposures of BIC were not clinically significant.

Relative to fasting conditions, the exposure to FTC was similar following administration of BIKTARVY with a moderate or high fat meal.

Relative to fasting conditions, the administration of BIKTARVY with a moderate or high fat meal resulted in a 48% and 63% increase in TAF exposures, respectively. The alterations in mean systemic exposures of TAF were not clinically significant.

BIKTARVY may be administered without regard to food.

## 9.6 Drug-Herb Interactions

Coadministration of St. John's wort may significantly decrease BIC and TAF plasma concentrations, which may result in loss of therapeutic effect and development of resistance.

Coadministration of BIKTARVY with St. John's wort is contraindicated.

## 9.7 Drug-Laboratory Test Interactions

Interactions of BIKTARVY with laboratory tests have not been established.

# 10 CLINICAL PHARMACOLOGY

## 10.1 Mechanism of Action

BIKTARVY is a fixed-dose combination, single tablet regimen of the antiviral drugs BIC, FTC and TAF.

### ***Bictegravir***

Bictegravir is an integrase strand transfer inhibitor (INSTI) that binds to the integrase active site and blocks the strand transfer step of retroviral deoxyribonucleic acid (DNA) integration which is essential for the HIV replication cycle.



Bictegravir has activity that is specific to human immunodeficiency virus (HIV-1 and HIV-2).

### **Emtricitabine**

FTC is a nucleoside analogue of 2'-deoxycytidine. FTC is phosphorylated by cellular enzymes to form FTC triphosphate. FTC triphosphate inhibits HIV replication through incorporation into viral DNA by the HIV reverse transcriptase, which results in DNA chain-termination.

FTC has activity that is specific to human immunodeficiency virus (HIV-1 and HIV-2) and hepatitis B virus.

FTC triphosphate is a weak inhibitor of mammalian DNA polymerases that include mitochondrial DNA polymerase  $\gamma$  and there was no evidence of toxicity to mitochondria *in vitro* and *in vivo*.

### **Tenofovir Alafenamide**

TAF is a phosphoramidate prodrug of tenofovir (2'-deoxyadenosine monophosphate analogue). TAF is permeable into cells and due to increased plasma stability and intracellular activation through hydrolysis by cathepsin A, TAF is more efficient than TDF in loading tenofovir into peripheral blood mononuclear cells (PBMCs) (including lymphocytes and other HIV target cells) and macrophages. Intracellular tenofovir is subsequently phosphorylated to the pharmacologically active metabolite tenofovir diphosphate. Tenofovir diphosphate inhibits HIV replication through incorporation into viral DNA by the HIV reverse transcriptase, which results in DNA chain-termination.

Tenofovir has activity that is specific to human immunodeficiency virus (HIV-1 and HIV-2) and hepatitis B virus. *In vitro* studies have shown that both FTC and tenofovir can be fully phosphorylated when combined in cells. Tenofovir diphosphate is a weak inhibitor of mammalian DNA polymerases that include mitochondrial DNA polymerase  $\gamma$  and there is no evidence of mitochondrial toxicity *in vitro* based on several assays including mitochondrial DNA analyses.

## **10.2 Pharmacodynamics**

### **Effects on Electrocardiogram**

#### ***Bictegravir***

In a thorough QT/QTc study in 48 healthy subjects, BIC at supratherapeutic doses of 1.5 and 6 times the recommended therapeutic dose did not affect the QT/QTc interval and did not prolong the PR interval.

#### ***Tenofovir Alafenamide***

In a thorough QT/QTc study in 48 healthy subjects, TAF at the therapeutic dose or at a supratherapeutic dose approximately 5 times the recommended therapeutic dose did not affect the QT/QTc interval and did not prolong the PR interval.

#### ***Emtricitabine***

The effect of FTC on the QT interval is not known.

### **Effects on Serum Creatinine**

The effect of BIC on renal function was evaluated in a randomized, blinded, parallel, placebo-

controlled trial in 40 healthy subjects who received BIC 75 mg (n=20) or placebo (n=20) once daily with food for 14 days. Mean change from baseline in serum creatinine in the BIC group was 0.1 mg per dL on Days 7 and 14. BIC did not have a significant effect on the estimated glomerular filtration rate or on the actual glomerular filtration rate (determined by the clearance of probe drug, iohexol) compared with placebo.

### 10.3 Pharmacokinetics

The pharmacokinetic (PK) properties of the components of BIKTARVY are provided in Table 10. The multiple dose PK parameters of the components of BIKTARVY are provided in Table 11.

**Table 10 Pharmacokinetic Properties of the Components of BIKTARVY**

	<b>Bictegravir</b>	<b>Emtricitabine</b>	<b>Tenofovir Alafenamide</b>
<b>Absorption</b>			
T <sub>max</sub> (h) <sup>a</sup>	2.0-4.0	1.5-2.0	0.5-2.0
Effect of high fat meal (relative to fasting) <sup>b</sup>	AUC ratio = 1.24 (1.16, 1.33) C <sub>max</sub> Ratio = 1.13 (1.06, 1.20)	AUC Ratio = 0.96 (0.93, 0.99) C <sub>max</sub> Ratio = 0.86 (0.78, 0.93)	AUC Ratio = 1.63 (1.43, 1.85) C <sub>max</sub> Ratio= 0.92 (0.73, 1.14)
<b>Distribution</b>			
% Bound to human plasma proteins	>99	<4	~80
Source of protein binding data	<i>In vitro</i>	<i>In vitro</i>	<i>Ex vivo</i>
Blood-to-plasma ratio	0.64	0.6	1.0
<b>Metabolism</b>			
Metabolism	CYP3A UGT1A1	Not significantly metabolized	Cathepsin A <sup>c</sup> (PBMCs) CES1 (hepatocytes)
<b>Elimination</b>			
Major route of elimination	Metabolism	Glomerular filtration and active tubular secretion	Metabolism
t <sub>1/2</sub> (h) <sup>d</sup>	17.3	10	0.51 <sup>d</sup>
% Of dose excreted in urine <sup>d</sup>	35	70	<1
% Of dose excreted in feces <sup>e</sup>	60.3	13.7	31.7

PBMCs = peripheral blood mononuclear cells; CES1 = carboxylesterase 1

a. Values reflect administration of BIKTARVY with or without food.

b. Values refer to geometric mean ratio [High-fat meal/fasting] in PK parameters and (90% confidence interval). High-calorie/high-fat meal = ~800 kcal, 50% fat.

c. *In vivo*, TAF is hydrolyzed within cells to form tenofovir (major metabolite), which is phosphorylated to the active metabolite, tenofovir diphosphate. *In vitro* studies have shown that TAF is metabolized to tenofovir by cathepsin A in PBMCs and macrophages; and by CES1 in hepatocytes.

d. t<sub>1/2</sub> values refer to median terminal plasma half-life. Note that the pharmacologically active metabolite of TAF, tenofovir diphosphate, has a half-life of 150-180 hours within PBMCs.

e. Dosing in mass balance studies: BIC (single dose administration of [<sup>14</sup>C] BIC); FTC (single dose administration of [<sup>14</sup>C] FTC after multiple dosing of FTC for ten days); TAF (single dose administration of [<sup>14</sup>C] TAF).

**Table 11 Multiple Dose PK Parameters of BIC, FTC, and TAF Following Oral Administration With or Without Food in HIV-Infected Adults**

Parameter	Bictegravir <sup>a</sup> Mean (CV%)	Emtricitabine <sup>b</sup> Mean (CV%)	Tenofovir Alafenamide <sup>c</sup> Mean (CV%)
C <sub>max</sub> (µg per mL)	6.15 (22.9)	2.13 (34.7)	0.121 (15.4)
AUC <sub>tau</sub> (µg·h per mL)	102 (26.9)	12.3 (29.2)	0.142 (17.3)
C <sub>trough</sub> (µg per mL)	2.61 (35.2)	0.096 (37.4)	NA

CV = Coefficient of Variation; NA = Not Applicable

a. From Population PK analysis in Studies 1489, 1490, 1844, and 1878; N=1193.

b. From Intensive PK analysis in Studies 1489, 1490, 1844, and 1878; N=77.

c. From Population PK analysis in Studies 1489 and 1490; N=486.

### Linearity/Non-linearity

#### **Bictegravir**

The multiple dose pharmacokinetics of BIC are dose proportional over the dose range of 25 to 100 mg.

#### **Emtricitabine**

The multiple dose pharmacokinetics of FTC are dose proportional over the dose range of 25 to 200 mg.

#### **Tenofovir Alafenamide**

TAF exposures are dose proportional over the dose range of 8 mg to 125 mg.

### Special Populations and Conditions

- **Pediatrics:** Mean BIC C<sub>trough</sub> was lower in 50 pediatric patients aged 12 to < 18 years (≥ 35 kg) who received BIKTARVY in Study 1474 relative to adults following administration of BIKTARVY, but was not considered clinically significant based on exposure-response relationships; exposures of FTC and TAF in these pediatric patients were similar to those in adults (Table 12).

**Table 12 Multiple Dose PK Parameters of BIC, FTC, and TAF Following Oral Administration of BIKTARVY in HIV-Infected Pediatric Patients Aged 12 to < 18 years and Weighing ≥ 35 kg (Adolescents)**

Parameter	Bictegravir <sup>a</sup> Mean (CV%)	Emtricitabine <sup>b</sup> Mean (CV%)	Tenofovir Alafenamide <sup>a</sup> Mean (CV%)
C <sub>max</sub> (µg per mL)	6.24 (27.1)	2.69 (34.0)	0.133 (70.2)
AUC <sub>tau</sub> (µg·h per mL)	89.1 (31.0)	13.6 (21.7)	0.196 (50.3)
C <sub>trough</sub> (µg per mL)	1.78 (44.4)	0.064 (25.0)	NA

CV=Coefficient of Variation; NA=Not Applicable

a. From Population PK analysis of Cohort 1 of Trial 1474 (n=50 for BIC; n=49 for TAF).

b. From Intensive PK analysis of Cohort 1 of Trial 1474 (n=24).

Mean BIC  $C_{max}$ , and exposures of FTC and TAF ( $AUC_{tau}$  and  $C_{max}$ ) achieved in 50 pediatric patients between the ages of 6 to < 12 years and weighing  $\geq 25$  kg who received BIKTARVY in Study 1474 were higher than exposures in adults; however, the increase was not considered clinically significant as the safety profiles were similar in adult and pediatric patients (Table 13).

**Table 13 Multiple Dose PK Parameters of BIC, FTC, and TAF Following Oral Administration of BIKTARVY in HIV-Infected Pediatric Patients Aged 6 to < 12 years and Weighing  $\geq 25$  kg (Children)**

Parameter	Bictegravir <sup>a</sup> Mean (CV%)	Emtricitabine <sup>b</sup> Mean (CV%)	Tenofovir Alafenamide <sup>a</sup> Mean (CV%)
$C_{max}$ ( $\mu\text{g per mL}$ )	9.46 (24.3)	3.89 (31.0)	0.205 (44.6)
$AUC_{tau}$ ( $\mu\text{g}\cdot\text{h per mL}$ )	128 (27.8)	17.6 (36.9)	0.278 (40.3)
$C_{trough}$ ( $\mu\text{g per mL}$ )	2.36 (39.0)	0.227 (323)	NA

CV=Coefficient of Variation; NA=Not Applicable

a. From Population PK analysis of Cohort 2 of Trial 1474 (n=50 for BIC; n=47 for TAF).

b. From Intensive PK analysis of Cohort 2 of Trial 1474 (n=25 except n=24 for  $C_{trough}$ ).

- **Geriatrics:** The pharmacokinetics of BIC, FTC, and TAF have not been fully evaluated in the elderly (65 years of age and older). Population pharmacokinetics analysis of HIV-infected patients in Phase 3 trials of BIKTARVY showed that age did not have a clinically relevant effect on exposures of BIC and TAF up to 74 years of age.
- **Sex:** Based on population pharmacokinetic analyses, no dosage adjustment for BIKTARVY is recommended based on gender.
- **Ethnic origin:** Based on population pharmacokinetic analyses, no dosage adjustment for BIKTARVY is recommended based on race.
- **Hepatic Insufficiency:**

#### **Bictegravir**

Clinically relevant changes in the pharmacokinetics of BIC were not observed in subjects with moderate (Child-Pugh Class B) hepatic impairment.

#### **Emtricitabine**

The pharmacokinetics of FTC have not been studied in subjects with hepatic impairment; however, FTC is not significantly metabolized by liver enzymes; therefore, the impact of liver impairment should be limited.

#### **Tenofovir Alafenamide**

Clinically relevant changes in the pharmacokinetics of TAF or its metabolite tenofovir were not observed in subjects with mild, moderate, or severe (Child-Pugh Class A, B and C) hepatic impairment; no TAF dose adjustment is required in subjects with hepatic impairment.

- **Renal Insufficiency:**

*Severe Renal Impairment (estimated CrCl  $\geq$  15 and  $<$  30 mL/minute)*

No clinically relevant differences in BIC, TAF, or tenofovir pharmacokinetics were observed between healthy subjects and subjects with severe renal impairment (estimated CrCl  $\geq$  15 and  $<$  30 mL/minute) in Phase 1 studies. In a separate Phase 1 study of FTC alone, FTC exposures were increased in patients with severe renal impairment. The safety of BIKTARVY has not been established in patients with estimated CrCl  $\geq$  15 mL and  $<$  30 mL/min.

*End Stage Renal Disease (estimated CrCl  $<$  15 mL/minute)*

Exposures of FTC and tenofovir in 12 patients with ESRD (estimated CrCl  $<$  15 mL/minute) on chronic hemodialysis who received FTC+TAF in combination with EVG+COBI as a fixed-dose combination tablet in Study 1825 were significantly higher than in patients with normal renal function. However, the safety profile of FTC+TAF in patients with ESRD on chronic hemodialysis who received FTC+TAF in combination with EVG+COBI was similar to that in patients with normal renal function. No clinically relevant differences in TAF pharmacokinetics were observed in patients with ESRD as compared to those with normal renal function.

In the extension phase of Study 1825, a lower BIC  $C_{\text{trough}}$  was observed in patients with ESRD who received BIKTARVY compared to patients with normal renal function, but this difference was not considered clinically relevant.

There are no pharmacokinetic data on BIC, FTC or TAF in patients with creatinine clearance  $<$  15 mL/minute not on chronic hemodialysis.

- **Hepatitis B and/or Hepatitis C Virus Coinfection**

Pharmacokinetics of BIC, FTC, and TAF have not been fully evaluated in patients coinfecting with hepatitis B and/or C virus.

## **11 STORAGE, STABILITY AND DISPOSAL**

### **Bottle**

Dispense only in original container. Keep the bottle tightly closed. Do not use if seal over bottle opening is broken or missing. Store below 30°C.

### **Blister Pack**

Dispense only in original container. Do not use if the foil over the blister or the seal around the blister card is broken. Store BIKTARVY between 15-30 °C (59-86 °F).

## **12 SPECIAL HANDLING INSTRUCTIONS**

There are no special handling instructions.

## PART II: SCIENTIFIC INFORMATION

### 13 PHARMACEUTICAL INFORMATION

BIKTARVY (BIC, FTC, and TAF) is a fixed dose combination, single tablet regimen containing BIC, FTC, and TAF for oral administration.

Each tablet contains 50 mg of BIC (equivalent to 52.5 mg of bicitegravir sodium), 200 mg of FTC, and 25 mg of TAF (equivalent to 28.0 mg of tenofovir alafenamide fumarate) and the following inactive ingredients: croscarmellose sodium, magnesium stearate, and microcrystalline cellulose. The tablets are film-coated with a coating material containing iron oxide black, iron oxide red, polyethylene glycol, polyvinyl alcohol, talc, and titanium dioxide.

#### Bicitegravir

##### Drug Substance

Common Name: bicitegravir sodium (USAN)

Chemical Name: Sodium (2R,5S,13aR)-7,9-dioxo-10-[(2,4,6-trifluorobenzyl)carbamoyl]-2,3,4,5,7,9,13,13a-octahydro-2,5-methanopyrido[1',2':4,5]pyrazino[2,1-b][1,3]oxazepin-8-olate

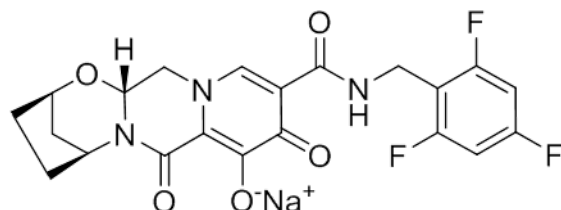
Empirical formula:  $C_{21}H_{17}F_3N_3NaO_5$

$C_{21}H_{18}F_3N_3O_5$  (bicitegravir free acid)

Molecular Weight: 471.4

449.4 (bicitegravir free acid)

Structural formula:



#### Physicochemical Properties:

**Description:** Bicitegravir sodium is an off-white to yellow solid.

**Solubility:** The solubility is approximately 0.1 mg per mL in water at 20°C. The partition coefficient (log P) is 1.45 and the pKa is 8.6.

#### Emtricitabine

##### Drug Substance

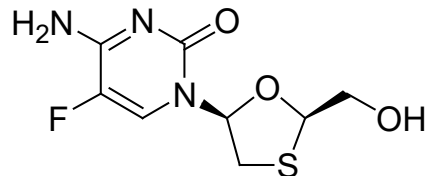
Common Name: emtricitabine (USAN)

**Chemical Name:** 5-fluoro-1-(2R,5S)-[2-(hydroxymethyl)-1,3-oxathiolan-5-yl]cytosine

**Empirical Formula:** C<sub>8</sub>H<sub>10</sub>FN<sub>3</sub>O<sub>3</sub>S

**Molecular Weight:** 247.24

**Structural Formula:**



**Physicochemical Properties:**

**Description:** FTC is a white to off-white crystalline powder.

**Solubility:** The solubility is approximately 112 mg/mL in water at 25 °C. The partition coefficient (log P) is -0.43 and the pKa is 2.65.

**Tenofovir alafenamide**

### Drug Substance

**Common Name:** Tenofovir alafenamide hemifumarate  
Tenofovir alafenamide fumarate (USAN)

**Chemical Name:** Propan-2-yl N-[(S)-({[(2R)-1-(6-amino-9H-purin-9-yl)propan-2-yl]-oxy)methyl](phenoxy)phosphoryl]-L-alaninate, (2E)-but-2-enedioate (2:1)

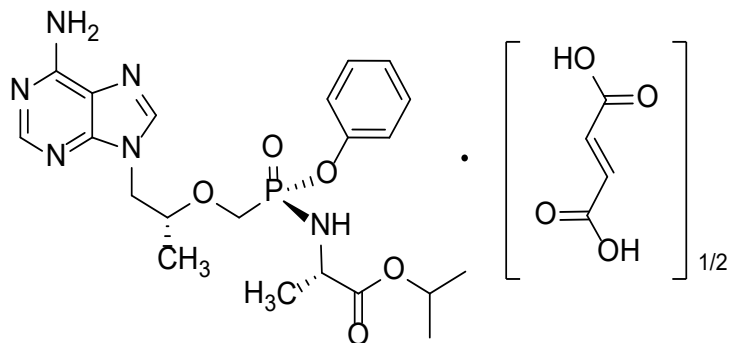
**Empirical Formula:** C<sub>21</sub>H<sub>29</sub>O<sub>5</sub>N<sub>6</sub>P•1/2(C<sub>4</sub>H<sub>4</sub>O<sub>4</sub>)

C<sub>21</sub>H<sub>29</sub>O<sub>5</sub>N<sub>6</sub>P (tenofovir alafenamide free base)

**Molecular Weight:** 534.5

476.5 (tenofovir alafenamide free base)

**Structural Formula:**



**Physicochemical Properties:**

**Description:** TAF hemifumarate is a white to off-white or tan powder.

**Solubility:** The solubility of TAF hemifumarate in water, pH 8.0 (50 mM phosphate buffer) at 20 °C is 4.86 mg/mL. The partition coefficient (log P) is 1.6 and the pKa is 3.96.

**14 CLINICAL TRIALS**

The efficacy and safety of BIKTARVY were evaluated in the studies summarized in Table 14.



## 14.1 Trial Design and Study Demographics

**Table 14** Trials Conducted with BIKTARVY in Patients with HIV-1 Infection

Trial	Population	Study Arms (N)	Timepoint (Week)
Study 1489 <sup>a</sup>	Treatment-naïve adults	BIKTARVY (314) ABC/DTG/3TC (315)	144
Study 1490 <sup>a</sup>		BIKTARVY (320) DTG + FTC/TAF(325)	144
Study 1844 <sup>a</sup>	Virologically-suppressed <sup>c</sup> adults	BIKTARVY (282) ABC/DTG/3TC (281)	48
Study 1878 <sup>b</sup>		BIKTARVY (290) ATV or DRV (with cobicistat or ritonavir) plus either FTC/TDF or ABC/3TC (287)	48
Study 1474 <sup>d</sup> Cohort 1	Virologically-suppressed <sup>c</sup> adolescents (Cohort 1: 12 to < 18 years of age; weight ≥ 35 kg)	BIKTARVY (50)	48
Study 1474 <sup>d</sup> Cohort 2	Virologically-suppressed <sup>c</sup> children (Cohort 2: 6 to < 12 years of age; weight ≥ 25 kg)	BIKTARVY (50)	24
Study 1825	Virologically suppressed <sup>c</sup> adults with ESRD <sup>e</sup> receiving chronic hemodialysis	FTC+TAF in combination with EVG and COBI as a fixed-dose combination (55). In an extension phase of Study 1825, 10 virologically suppressed patients switched to BIKTARVY.	48 <sup>f</sup>
Study 4449	Virologically suppressed <sup>c</sup> adults aged 65 years and over	BIKTARVY (86)	48

a. Randomized, double blind, active controlled trial.

b. Randomized, open label, active controlled trial.

c. HIV-1 RNA less than 50 copies per mL.

d. Open label trial

e. End stage renal disease (estimated CrCl of less than 15 mL per minute by Cockcroft-Gault method).

f. Patients received FTC+TAF in combination with elvitegravir and cobicistat for 96 weeks, followed by an extension phase in which 10 patients received BIKTARVY for 48 weeks.

## Treatment-Naïve HIV-1 Infected Patients

The efficacy and safety of Biktarvy in HIV-1 infected, treatment-naïve adults are based on 48-week data from two randomized, double-blind, active-controlled studies, GS-US- 380-1489 (N=629) and GS-US-380-1490 (N=645).

In Study 1489, patients were randomized in a 1:1 ratio to receive either BIKTARVY (N=314) or ABC/DTG/3TC (600/50/300 mg) (N=315) once daily. In Study 1490, patients were randomized in a 1:1 ratio to receive either BIKTARVY (N=320) or DTG + FTC/TAF (50+200/25 mg) (N=325) once daily.

In Study 1489, the mean age was 34 years (range 18–71), 90% were male, 57% were White, 36% were Black, and 3% were Asian. 22% of patients identified as Hispanic or Latino. The mean baseline plasma HIV-1 RNA was 4.4 log<sub>10</sub> copies/mL (range 1.3-6.5). The mean baseline CD4+ cell count was 464 cells per mm<sup>3</sup> (range 0-1424) and 11% had CD4+ cell counts less than 200 cells per mm<sup>3</sup>. 16% of patients had baseline viral loads greater than 100,000 copies per mL.

In Study 1489, 0.6% of patients had HIV/HCV coinfection at baseline. In Study 1490, the mean age was 37 years (range 18-77), 88% were male, 59% were White, 31% were Black, and 3% were Asian. 25% of patients identified as Hispanic or Latino. The mean baseline plasma HIV-1 RNA was 4.4 log<sub>10</sub> copies/mL (range 2.3-6.6). The mean baseline CD4+ cell count was 456 cells per mm<sup>3</sup> (range 2-1636), and 12% had CD4+ cell counts less than 200 cells per mm<sup>3</sup>. 19% of patients had baseline viral loads greater than 100,000 copies per mL. In Study 1490, 2% of patients had HIV/HBV coinfection and 2% had HIV/HCV coinfection at baseline.

In both studies, patients were stratified by baseline HIV-1 RNA (less than or equal to 100,000 copies/mL, greater than 100,000 copies per mL to less than or equal to 400,000 copies per mL, or greater than 400,000 copies/mL), by CD4 count (less than 50 cells/μL, 50-199 cells/μL, or greater than or equal to 200 cells/μL), and by region (US or ex-US).

For demographic and baseline characteristics for Study 1489 and 1490, see Table 15.

Table 15

**Demographic and Baseline Characteristics of Treatment-Naïve Patients in Studies 1489 and 1490**

	Study 1489			Study 1490		
	BIKTARVY N = 314 n (%)	ABC/DTG/3TC N = 315 n (%)	Total N = 629 n (%)	BIKTARVY N=320 n (%)	DTG + F/TAF N=325 n (%)	Total N=645 n (%)
<b>Demographic characteristics</b>						
Median age, years (range)	31 (18-71)	32 (18-68)	32 (18-71)	33 (18-71)	34 (18-77)	34 (18-77)
Sex						
Male	285 (91)	282 (90)	567 (90)	280 (88)	288 (89)	568 (88)
Female	29 (9)	33 (10)	62 (10)	40 (13)	37 (11)	77 (12)
Race						
American Indian or Alaska Native	2 (0.6)	4 (1)	6 (1)	1 (0.3)	1 (0.3)	2 (0.3)
Asian	6 (2)	10 (3)	16 (3)	7 (2)	10 (3)	17 (3)
Black	114 (37)	112 (36)	226 (36)	97 (30)	100 (31)	197 (31)
Native Hawaiian or Pacific Islander	1 (0.3)	2 (0.6)	3 (0.5)	1 (0.3)	0	1 (0.2)
White	180 (58)	179 (57)	359 (57)	183 (57)	195 (60)	378 (59)
Other	9 (3)	8 (3)	17 (3)	31 (10)	19 (6)	50 (8)
Not Permitted <sup>a</sup>	2	0	2	-	-	-
<b>Baseline disease characteristics</b>						
Median baseline HIV-1 RNA log <sub>10</sub> copies/mL (range)	4.42 (2.23-6.52)	4.51 (1.28-6.19)	4.47 (1.28-6.52)	4.43 (2.29-6.58)	4.45 (2.76-6.15)	4.44 (2.29-6.58)
Patients with viral load ≤ 100,000 copies/mL	261 (83)	265 (84)	526 (84)	254 (79)	271 (83)	525 (81)
Patients with viral load > 100,000 copies/mL	53 (17)	50 (16)	103 (16)	66 (21)	54 (17)	120 (19)
Patients with CD4+ cell counts < 200 cells/mm <sup>3</sup>	36 (11)	32 (10)	68 (11)	44 (14)	34 (10)	78 (12)
HIV disease status						
Asymptomatic	286 (91)	286 (91)	572 (91)	286 (89)	288 (89)	574 (89)

	Study 1489			Study 1490		
	BIKTARVY N = 314 n (%)	ABC/DTG/3TC N = 315 n (%)	Total N = 629 n (%)	BIKTARVY N=320 n (%)	DTG + F/TAF N=325 n (%)	Total N=645 n (%)
Symptomatic HIV infection	16 (5)	14 (4)	30 (5)	10 (3)	11 (3)	21 (3)
AIDS	12 (4)	15 (5)	27 (4)	24 (8)	26 (8)	50 (8)
eGFR <sub>CG</sub> (mL/min), median (Q1, Q3)	125.9 (107.7, 146.3)	123.0 (107.0, 144.3)	124.8 (107.6, 145.2)	120.4 (100.8, 141.8)	120.6 (102.8, 145.1)	120.6 (102.1, 143.3)
HIV/HBV Coinfection Status <sup>b</sup>						
Yes	0	0	0	8 (3)	6 (2)	14 (2)
No	313 (100)	312 (100)	625 (100)	310 (97)	318 (98)	628 (98)
Missing	1	3	4	2	1	3
HIV/HCV Coinfection Status <sup>b</sup>						
Yes	0	4 (1)	4 (0.6)	5 (2)	5 (2)	10 (2)
No	313 (100)	311 (99)	624 (99)	315 (98)	320 (98)	635 (98)
Missing	1	0	1	-	-	-

a. Not Permitted = Local regulators did not allow collection of race or ethnicity information.

For race and ethnicity, patients who reported "Not Permitted" were excluded from the percentage and p-value calculation.

b. HIV/HBV and HIV/HCV coinfection status were missing when test was not done at screening.

### HIV-1 Virologically-Suppressed Patients Who Switched to BIKTARVY

In Study 1844, the efficacy and safety of switching from a regimen of DTG + ABC/3TC or ABC/DTG/3TC to BIKTARVY were evaluated in a randomized, double-blind study of virologically-suppressed (HIV-1 RNA less than 50 copies per mL) HIV-1 infected adults (N=563). Patients must have been stably suppressed (HIV-1 RNA less than 50 copies per mL) on their baseline regimen for at least 3 months prior to study entry. Patients were randomized in a 1:1 ratio to either switch to BIKTARVY at baseline (N=282), or stay on their baseline antiretroviral regimen as the FDC of ABC/DTG/3TC (N=281). Patients had a mean age of 45 years (range 20–71), 89% were male, 73% were White, and 22% were Black. 17% of patients identified as Hispanic/Latino. The mean baseline CD4+ cell count was 723 cells per mm<sup>3</sup> (range 124–2444). At baseline, one patient had HIV/HCV coinfection.

In Study 1878, the efficacy and safety of switching from either ABC/3TC or FTC/TDF (200/300 mg) plus ATV or DRV (given with either cobicistat or ritonavir) to BIKTARVY were evaluated in a randomized, open-label study of virologically-suppressed HIV-1 infected adults (N=577). Patients must have been stably suppressed on their baseline regimen for at least 6 months and must not have been previously treated with any INSTI. Patients were randomized in a 1:1 ratio to either switch to BIKTARVY (N=290) or stay on their baseline antiretroviral regimen (N=287).

Patients had a mean age of 46 years (range 20–79), 83% were male, 66% were White, and 26% were Black. 19% of patients identified as Hispanic/Latino. The mean baseline CD4+ cell count was 663 cells per mm<sup>3</sup> (range 62–2582). Patients were stratified by prior treatment regimen (ie, TDF-containing regimen vs non-TDF containing regimen). At screening, 15% of patients were receiving ABC/3TC plus ATV or DRV (given with either cobicistat or ritonavir) and 85% of patients were receiving FTC/TDF plus ATV or DRV (given with either cobicistat or ritonavir). At baseline, 2% of patients had HIV/HBV coinfection and 2% had HIV/HCV coinfection.

For demographic and baseline characteristics for Studies 1844 and 1878, see Table 16.

**Table 16 Demographic and Baseline Characteristics of Virologically Suppressed Patients in Studies 1844 and 1878**

	Study 1844			Study 1878		
	BIKTARVY N = 282 n (%)	ABC/DTG/3TC N = 281 n (%)	Total N = 563 n (%)	BIKTARVY N=290 n (%)	SBR N=287 n (%)	Total N=577 n (%)
<b>Demographic characteristics</b>						
Median age, years (range)	47 (21-71)	45 (20-70)	46 (20-71)	48 (20-74)	47 (21-79)	48 (20-79)
Sex						
Male	247 (88)	252 (90)	499 (89)	243 (84)	234 (82)	477 (83)
Female	35 (12)	29 (10)	64 (11)	47 (16)	53 (18)	100 (17)
Race						
American Indian or Alaska Native	2 (0.7)	2 (0.7)	4 (0.7)	3 (1)	3 (1)	6 (1)
Asian	9 (3)	9 (3)	18 (3)	6 (2)	10 (3)	16 (3)
Black	59 (21)	62 (22)	121 (22)	79 (27)	72 (25)	151 (26)
Native Hawaiian or Pacific Islander	3 (1)	0	3 (0.5)	0	0	0
White	206 (73)	202 (73)	408 (73)	188 (65)	190 (66)	378 (66)
Other	3 (1)	3 (1)	6 (1)	14 (5)	12 (4)	26 (5)
Not Permitted <sup>a</sup>	0	3	3	-	-	-
<b>Baseline disease characteristics</b>						
Patients with CD4+ cell counts < 200 cells/mm <sup>3</sup>	6 (2)	4 (1)	10 (2)	4 (1)	8 (3)	12 (2)

	Study 1844			Study 1878		
	BIKTARVY N = 282 n (%)	ABC/DTG/3TC N = 281 n (%)	Total N = 563 n (%)	BIKTARVY N=290 n (%)	SBR N=287 n (%)	Total N=577 n (%)
CD4 cell count (cells/mm <sup>3</sup> ), median (range)	732 (124-2444)	661 (125-1570)	695 (124-2444)	617 (147-2582)	626 (62-1684)	624 (62-2582)
HIV disease status						
Asymptomatic	243 (86)	245 (87)	488 (87)	240 (83)	234 (82)	474 (82)
Symptomatic HIV infection	9 (3)	9 (3)	18 (3)	16 (6)	20 (7)	36 (6)
AIDS	30 (11)	27 (10)	57 (10)	34 (12)	33 (11)	67 (12)
eGFR <sub>CG</sub> (mL/min), median (Q1, Q3)	100.5 (84.5, 119.0)	100.7 (84.9, 122.4)	100.7 (84.6, 120.1)	106.7 (87.0, 124.2)	104.9 (87.1, 125.3)	105.6 (87.1, 124.8)
HIV/HBV Coinfection Status <sup>b</sup>						
Yes	0	0	0	8 (3)	6 (2)	14 (2)
No	282 (100)	281 (100)	563 (100)	278 (97)	280 (98)	558 (98)
Missing	-	-	-	4	1	5
HIV/HCV Coinfection Status <sup>b</sup>						
Yes	0	1 (0.4)	1 (0.2)	5 (2)	5 (2)	10 (2)
No	282 (100)	280 (100)	562 (100)	283 (98)	282 (98)	565 (98)
Missing	-	-	-	2	0	2

a. Not Permitted = Local regulators did not allow collection of race or ethnicity information.

For race and ethnicity, patients who reported "Not Permitted" were excluded from the percentage and p-value calculation.

b. HIV/HBV and HIV/HCV coinfection status were missing when test was not done at screening.

## Pediatric Patients

In Study 1474, an open-label, single arm trial the efficacy, safety, and pharmacokinetics of BIKTARVY in HIV-1 infected pediatric patients were evaluated in virologically-suppressed adolescents between the ages of 12 to less than 18 years weighing at least 35 kg (N=50) and in virologically-suppressed children between the ages of 6 to less than 12 years weighing at least 25 kg (N=50). Demographics and baseline characteristics for patients in the 2 study cohorts (Cohort 1: virologically suppressed adolescents [12 to < 18 years; ≥ 35 kg]; Cohort 2: virologically suppressed children [6 to < 12 years; ≥ 25 kg]) are presented in Table 17.

Table 17

**Demographic and Baseline Characteristics of Virologically Suppressed Pediatric Patients in Study 1474 (Cohort 1 and Cohort 2)**

	Study 1474	
	Cohort 1 12 to < 18 years of age (N=50)	Cohort 2 6 to < 12 years of age (N=50)
<b>Demographic characteristics</b>		
Median age, years (range)	15 (12-17)	10 (6-11)
Sex		
Male	18	23
Female	32	27
Race		
Asian	13	11
Black	32	36
Baseline BMI (kg/m <sup>2</sup> ), median (Q1, Q3)	19.1 (17.8, 22.4)	16.7 (15.6, 18.7)
<b>Baseline disease characteristics</b>		
HIV-1 RNA Category (copies/mL)		
< 50	50	50
≥ 50	0	0
CD4 cell count (cells/μL), median (Q1, Q3)	750 (586, 926)	898 (707, 1121)
eGFR by Schwartz formula (mL/min/1.73 m <sup>2</sup> ), median (Q1, Q3)	145.0 (134.0, 170.0)	153.5 (144.0, 173.0)

## 14.2 Study Results

### Clinical Trial Results in Treatment-Naïve HIV-1 Infected Patients

Treatment outcomes of Studies 1489 and 1490 through 48 and 144 weeks are presented in Table 18.

**Table 18**

**Virologic Outcomes of Randomized Treatment in Studies 1489 and 1490 at Weeks 48<sup>a</sup> and 144<sup>b</sup> in Treatment-Naïve Patients**

	Week 48				Week 144			
	Trial 1489		Trial 1490		Trial 1489		Trial 1490	
	BIKTARVY (N=314)	ABC/DTG/ 3TC (N=315)	BIKTARVY (N=320)	DTG + FTC/TAF (N=325)	BIKTARVY (N=314)	ABC/DTG/ 3TC (N=315)	BIKTARVY (N=320)	DTG + FTC/TAF (N=325)
<b>HIV-1 RNA &lt; 50 copies/mL</b>	92%	93%	89%	93%	82%	84%	82%	84%
Treatment Difference (95% CI) BIKTARVY vs. Comparator	-0.6% (-4.8% to 3.6%)		-3.5% (-7.9% to 1.0%)		-2.6% (-8.5% to 3.4%)		-1.9% (-7.8% to 3.9%)	
<b>HIV-1 RNA ≥ 50 copies/mL<sup>c</sup></b>	1%	3%	4%	1%	<1%	3%	5%	3%
<b>No Virologic Data at Week 48 or Week 144 Window</b>	7%	4%	6%	6%	18%	13%	13%	13%
Discontinued Study Drug Due to AE or Death <sup>d</sup>	0	1%	1%	1%	<1%	2%	3%	3%
Discontinued Study Drug Due to Other Reasons and Last Available HIV-1 RNA <50 copies/mL <sup>e</sup>	5%	3%	3%	4%	16%	11%	11%	9%
Missing Data During Window but on Study Drug	2%	<1%	2%	1%	1%	<1%	0	1%

a. Week 48 window was between Day 295 and 378 (inclusive).

b. Week 144 window was between Day 967 and 1050 (inclusive).

c. Includes patients who had ≥ 50 copies/mL in the Week 48 window; patients who discontinued early due to lack or loss of efficacy; patients who discontinued for reasons other than an adverse event (AE), death or lack or loss of efficacy and at the time of discontinuation had a viral value of ≥ 50 copies/mL.

d. Includes patients who discontinued due to AE or death at any time point from Day 1 through the time window if this resulted in no virologic data on treatment during the specified window.

e. Includes patients who discontinued for reasons other than an AE, death, or lack or loss of efficacy, e.g., withdrew consent, loss to follow-up, etc



BIKTARVY was noninferior in achieving HIV-1 RNA less than 50 copies per mL at Weeks 48, 96 and 144 when compared to ABC/DTG/3TC and to DTG+FTC/TAF, respectively. In Study 1489, 88% of patients who received BIKTARVY versus 90% of patients who received ABC/DTG/3TC, had HIV RNA <50 copies/mL at Week 96. At Week 96, 1% of patients who received BIKTARVY had HIV-1 RNA ≥50 copies/mL versus 2% in those who received ABC/DTG/3TC. The percentage of patients with no virologic data at the Week 96 window was 12% and 8% for those who received BIKTARVY and ABC/DTG/3TC, respectively. In Study 1490, 84% of patients who received BIKTARVY versus 87% of patients who received DTG+FTC/TAF, had HIV RNA <50 copies/mL at Week 96. At Week 96, 4% of patients who received BIKTARVY had HIV-1 RNA ≥50 copies/mL versus 3% in those who received DTG+FTC/TAF. The percentage of patients with no virologic data at the Week 96 window was 12% and 11% for those who received BIKTARVY and DTG+FTC/TAF, respectively. Treatment outcomes between treatment groups were similar across subgroups by age, sex, race, baseline viral load, and baseline CD4+ cell count up to Week 144 in both studies.

In Study 1489, the mean increase from baseline in CD4+ was 233 and 229 cells per mm<sup>3</sup>, at Week 48, 287 and 288 cells per mm<sup>3</sup> at Week 96, and 299 and 317 cells per mm<sup>3</sup> at Week 144, in the BIKTARVY and ABC/DTG/3TC groups, respectively. In Study 1490, the mean increase from baseline in CD4+ count was 180 and 201 cells per mm<sup>3</sup> at Week 48, 237 and 281 cells per mm<sup>3</sup> at Week 96, and 278 and 289 cells per mm<sup>3</sup> at Week 144, in the BIKTARVY and DTG+FTC/TAF groups, respectively.

### HIV-1 Virologically-Suppressed Patients Who Switched to BIKTARVY

Treatment outcomes of Studies 1844 and 1878 through Week 48 are presented in Table 19.

**Table 19** Virologic Outcomes of Studies 1844 and 1878 at Week 48<sup>a</sup> in Virologically-Suppressed Patients who Switched to BIKTARVY

	Study 1844		Study 1878	
	BIKTARVY (N=282)	ABC/DTG/3TC (N=281)	BIKTARVY (N=290)	ATV- or DRV- based regimen (N=287)
<b>HIV-1 RNA ≥ 50 copies/mL<sup>b</sup></b>	1%	<1%	2%	2%
Treatment Difference (95% CI)	0.7% (-1.0% to 2.8%)		0.0% (-2.5% to 2.5%)	
<b>HIV-1 RNA &lt; 50 copies/mL</b>	94%	95%	92%	89%
Treatment Difference (95% CI)	-1.4% (-5.5% to 2.6%)		3.2% (-1.6% to 8.2%)	

	Study 1844		Study 1878	
	BIKTARVY (N=282)	ABC/DTG/3TC (N=281)	BIKTARVY (N=290)	ATV- or DRV- based regimen (N=287)
<b>No Virologic Data at Week 48 Window</b>	5%	5%	6%	9%
Discontinued Study Drug Due to AE or Death and Last Available HIV-1 RNA < 50 copies/mL	2%	1%	1%	1%
Discontinued Study Drug Due to Other Reasons and Last Available HIV-1 RNA < 50 copies/mL <sup>c</sup>	2%	3%	3%	7%
Missing Data During Window but on Study Drug	2%	1%	2%	2%

- Week 48 window was between Day 295 and 378 (inclusive).
- Includes patients who had  $\geq 50$  copies/mL in the Week 48 window; patients who discontinued early due to lack or loss of efficacy; patients who discontinued for reasons other than lack or loss of efficacy and at the time of discontinuation had a viral value of  $\geq 50$  copies/mL.
- Includes patients who discontinued for reasons other than an AE, death, or lack or loss of efficacy, e.g., withdrew consent, loss to follow-up, etc.

In Study 1844, at Week 48, switching to BIKTARVY was noninferior to remaining on ABC/DTG/3TC with respect to the percentage of patients with HIV-1 RNA  $\geq 50$  copies/mL and the percentage of patients who maintained HIV-1 RNA < 50 copies/mL. Treatment outcomes between treatment groups were similar across subgroups by age, sex, race, and region. The mean change from baseline in CD4+ count at Week 48 was -31 cells/mm<sup>3</sup> in patients who switched to BIKTARVY and 4 cells/mm<sup>3</sup> in patients who stayed on their baseline antiretroviral regimen as the FDC ABC/DTG/3TC.

In Study 1878, at Week 48, switching to BIKTARVY was noninferior to remaining on an ATV- or DRV-based regimen with respect to the percentage of patients with HIV-1 RNA  $\geq 50$  copies/mL and the percentage of patients who maintained HIV-1 RNA < 50 copies/mL. Treatment outcomes between treatment groups were similar across subgroups by age, sex, race, and region. The mean change from baseline in CD4+ count at Week 48 was 25 cells/mm<sup>3</sup> in patients who switched to BIKTARVY and 0 cells/mm<sup>3</sup> in patients who stayed on their baseline regimen.

### **Bone Mineral Density:**

In Study 1489, bone mineral density (BMD) change from baseline to Week 144 was assessed by dual-energy X-ray absorptiometry (DXA). In patients who had both baseline and Week 144 hip and lumbar spine BMD measurements (n=236 and 243 in the BIKTARVY group and n=240 and 258 in the ABC/DTG/3TC group, for hip and lumbar spine, respectively), mean percentage changes in BMD were similar in the BIKTARVY group compared to the ABC/DTG/3TC group for hip (-1.0% vs. -1.3%) and lumbar spine (-0.4% vs. -0.04%).

In Study 1844, BMD change from baseline to Week 48 was assessed by DXA. In patients who had both baseline and Week 48 hip and lumbar spine BMD measurements (N=229 and 233 in

the BIKTARVY group and N=242 and 244 in the ABC/DTG/3TC group, for hip and lumbar spine, respectively), mean percentage increases in BMD were similar in the BIKTARVY group compared to the ABC/DTG/3TC group for hip (0.2% vs. 0.3%) and lumbar spine (0.7% vs. 0.4%).

### **Effects on Renal Parameters**

No patients receiving BIKTARVY in the Phase 3 studies developed proximal tubulopathy (including Fanconi Syndrome) or discontinued study drugs due to a renal and urinary disorder or associated investigation AE.

### **Pediatric Patients**

*Cohort 1: Virologically suppressed adolescents (12 to < 18 years; ≥ 35 kg):*

After switching to BIKTARVY, 98% (49/50) of patients in Cohort 1 remained suppressed (HIV-1 RNA < 50 copies/mL) at Week 48. The mean change from baseline in CD4+ cell count at Week 48 was -22 cells/mm<sup>3</sup>. Two of 50 patients met the criteria for inclusion in the resistance analysis population through Week 48. No emergent resistance to BIKTARVY was detected through Week 48.

*Cohort 2: Virologically suppressed children (6 to < 12 years; ≥ 25 kg):*

After switching to BIKTARVY, 100% (50/50) of patients in Cohort 2 remained suppressed (HIV-1 RNA < 50 copies/mL) at Week 24. The mean change from baseline in CD4+ cell count at Week 24 was -24 cells/mm<sup>3</sup>. No patient qualified for resistance analysis through Week 24.

### **Clinical Trial Results HIV-1 Infected Patients with Renal Impairment**

In Study 1825, an open-label single arm study, the efficacy, safety, and pharmacokinetics of FTC and TAF (components of BIKTARVY) were evaluated in virologically suppressed adults with ESRD (estimated CrCl of less than 15 mL/min) on chronic hemodialysis treated with FTC + TAF in combination with EVG and COBI as a fixed-dose combination tablet for 96 weeks (N = 55). In an extension phase of Study 1825, 10 virologically suppressed patients switched to BIKTARVY and all patients remained virologically suppressed (HIV-1 RNA < 50 copies/mL) for 48 weeks.

### **Clinical Trial in HIV-infected Adults over 65 years of age**

In Study 4449, the efficacy and safety of switching from a stable antiretroviral regimen to BIKTARVY were evaluated in an open-label, single arm study of virologically suppressed (HIV-1 RNA less than 50 copies per mL) HIV-1 infected adults aged 65 years and over (N = 86). Patients treated with BIKTARVY had a mean age of 70 years (range: 65 to 80). No patients had HIV RNA > 50 copies/mL at Weeks 24 and 48. Ninety-eight percent (84/86) and 91% (78/86) of patients remained suppressed (HIV-1 RNA < 50 copies/mL) at Week 24 and Week 48, respectively. Two and 8 patients did not have virologic data due to discontinuation or missing data at the Week 24 and Week 48 timepoints, respectively.

## 15 MICROBIOLOGY

### Antiviral Activity in Cell Culture

The triple combination of BIC, FTC, and TAF demonstrated synergistic antiviral activity in cell culture.

*Bictegravir*: The antiviral activity of BIC against laboratory and clinical isolates of HIV-1 was assessed in lymphoblastoid cell lines, PBMCs, primary monocyte/macrophage cells, and CD4+ T-lymphocytes. The EC<sub>50</sub> values for BIC were in the range of <0.05 to 6.6 nM. The protein-adjusted EC<sub>95</sub> of BIC was 361 nM (0.162 micrograms per mL) for wild type HIV-1 virus. Bictegravir displayed antiviral activity in cell culture against HIV-1 groups (M, N, O), including subtypes A, B, C, D, E, F and G (EC<sub>50</sub> values ranged from <0.05 and 1.71 nM), and activity against HIV-2 (EC<sub>50</sub> = 1.1 nM).

In a study of BIC with representatives from the major classes of approved anti-HIV agents (NRTIs [nucleoside reverse transcriptase inhibitors], NNRTIs [non-nucleoside reverse transcriptase inhibitors], INSTIs, and PIs [protease inhibitors]), additive to synergistic antiviral effects were observed. No antagonism was observed for these combinations.

*Emtricitabine*: The antiviral activity of FTC against laboratory and clinical isolates of HIV-1 was assessed in T lymphoblastoid cell lines, the MAGI-CCR5 cell line, and primary peripheral blood mononuclear cells. The EC<sub>50</sub> values for FTC were in the range of 0.0013–0.64 μM.

FTC displayed antiviral activity in cell culture against HIV-1 clades A, B, C, D, E, F, and G (EC<sub>50</sub> values ranged from 0.007–0.075 μM) and showed strain specific activity against HIV-2 (EC<sub>50</sub> values ranged from 0.007–1.5 μM).

In two-drug combination studies of FTC with NRTIs, NNRTIs, protease inhibitors (PIs), and INSTIs, additive to synergistic effects were observed. No antagonism was observed for these combinations.

*Tenofovir Alafenamide*: The antiviral activity of TAF against laboratory and clinical isolates of HIV-1 subtype B was assessed in lymphoblastoid cell lines, PBMCs, primary monocyte/macrophage cells and CD4-T lymphocytes. The EC<sub>50</sub> values for TAF ranged from 2.0 to 14.7 nM.

TAF displayed antiviral activity in cell culture against all HIV-1 groups (M, N, O), including subtypes A, B, C, D, E, F, and G (EC<sub>50</sub> values ranged from 0.10 to 12.0 nM) and strain specific activity against HIV-2 (EC<sub>50</sub> values ranged from 0.91 to 2.63 nM).

In a study of TAF with a broad panel of representatives from the major classes of approved anti-HIV agents (NRTIs, NNRTIs, INSTIs, and PIs), additive to synergistic effects were observed. No antagonism was observed for these combinations.

### Resistance

#### *In Cell Culture*

*Bictegravir*: HIV-1 isolates with reduced susceptibility to BIC have been selected in cell culture. In one selection, amino acid substitutions M50I and R263K emerged and phenotypic susceptibility to BIC was reduced 1.3-, 2.2-, and 2.9-fold for M50I, R263K, and M50I+R263K, respectively. In a second selection, amino acid substitutions T66I and S153F emerged and

phenotypic susceptibility to BIC was shifted 0.4-, 1.9-, and 0.5-fold for T66I, S153F, and T66I+S153F, respectively.

*Emtricitabine*: HIV-1 isolates with reduced susceptibility to FTC were selected in cell culture. Reduced susceptibility to FTC was associated with M184V or I substitutions in HIV-1 RT.

*Tenofovir Alafenamide*: HIV-1 isolates with reduced susceptibility to TAF have been selected in cell culture. HIV-1 isolates selected by TAF expressed a K65R substitution in HIV-1 RT; in addition, a K70E mutation in HIV-1 RT has been transiently observed. HIV-1 isolates with the K65R mutation have low level reduced susceptibility to abacavir, FTC, tenofovir, and lamivudine. *In vitro* drug resistance selection studies with TAF have shown no development of resistance increases above 2.5-fold after 6 months in culture.

### *In Clinical Trials*

#### *In Treatment-Naïve Patients:*

No patients receiving BIKTARVY had HIV-1 with treatment emergent genotypic or phenotypic resistance to BIC, FTC, or TAF in the final resistance analysis population (n=8 with HIV-1 RNA  $\geq$  200 copies/mL at the time of confirmed virologic failure, Week 48, Week 96, Week 144, or early study drug discontinuation) in a pooled analysis of 634 antiretroviral-naïve patients through Week 144 (Studies 1489 and 1490).

#### *In Virologically Suppressed Patients:*

No patients receiving BIKTARVY had HIV-1 with treatment emergent genotypic or phenotypic resistance to BIC, FTC, or TAF in the resistance analysis population (n=2 with HIV-1 RNA  $\geq$  200 copies/mL at the time of confirmed virologic failure, Week 48, or early study drug discontinuation) of 282 virologically-suppressed patients who switched from DTG + ABC/3TC or ABC/DTG/3TC to BIKTARVY (Study 1844).

No patients receiving BIKTARVY had HIV-1 with treatment emergent genotypic or phenotypic resistance to BIC, FTC, or TAF in the resistance analysis population (n=1 with HIV-1 RNA  $\geq$  200 copies/mL at the time of confirmed virologic failure, Week 48, or early study drug discontinuation) of 290 virologically-suppressed patients who switched from regimens of ATV or DRV (given with cobicistat or ritonavir), plus either FTC/TDF or ABC/3TC, to BIKTARVY (Study 1878).

## **Cross-Resistance**

### *Bictegravir:*

*Integrase Strand Transfer Inhibitor-resistant Mutant HIV-1 Strains*: Cross-resistance has been observed among INSTIs. The susceptibility of BIC was tested against 64 clinical isolates expressing known INSTI resistance-associated substitutions listed by IAS-USA (20 with single substitutions and 44 with 2 or more substitutions). Isolates with a single INSTI-resistance substitution including E92Q, T97A, Y143C/R, Q148R, and N155H showed less than 2-fold reduced susceptibility to BIC. All isolates (n=14) with more than 2.5-fold reduced susceptibility to BIC (above the biological cutoff for BIC) contained G140A/C/S and Q148H/R/K substitutions; the majority (64.3%, 9/14) had a complex INSTI resistance pattern with an additional INSTI-resistance substitution L74M, T97A, or E138A/K. Of those evaluated isolates containing G140A/C/S and Q148H/R/K substitutions in the absence of additional INSTI-resistance substitutions, 38.5% (5/13) showed more than 2.5-fold reduction. In addition, site-directed

mutant viruses with G118R (DTG and raltegravir treatment-emergent substitution) and G118R+T97A had 3.4- and 2.8-fold reduced susceptibility to BIC, respectively.

**Reverse Transcriptase Inhibitor- and Protease Inhibitor-resistant Strains:** BIC demonstrated equivalent antiviral activity against 5 NNRTI-resistant, 3 NRTI-resistant, and 4 PI-resistant HIV-1 mutant clones compared with the wild-type strain.

**Emtricitabine:**

FTC-resistant viruses with the M184V or I substitution were cross-resistant to lamivudine, but retained sensitivity to didanosine, stavudine, tenofovir, and zidovudine.

Viruses harboring substitutions conferring reduced susceptibility to stavudine and zidovudine-thymidine analog substitutions – TAMS (M41L, D67N, K70R, L210W, T215Y/F, K219Q/E) or didanosine (L74V) remained sensitive to FTC. HIV-1 containing the K103N substitution or other substitutions associated with resistance to NNRTIs was susceptible to FTC.

**Tenofovir Alafenamide:**

Tenofovir resistance substitutions K65R and K70E result in reduced susceptibility to abacavir, didanosine, FTC, lamivudine, and tenofovir, but retain sensitivity to zidovudine.

Multinucleoside resistant HIV-1 with a T69S double insertion mutation or with a Q151M substitution complex including K65R, showed reduced susceptibility to TAF in cell culture.

## 16 NON-CLINICAL TOXICOLOGY

### General Toxicology:

#### **Tenofovir Alafenamide**

Nonclinical studies in rats and dogs revealed bone and kidney as the primary target organs of toxicity.

### Carcinogenicity:

#### **Bictegravir**

Bictegravir was not carcinogenic in a 6-month rasH2 transgenic mouse study at doses of up to 100 and 300 mg/kg/day in males and females [approximately 15 and 23 times the exposure in humans at the recommended human dose], respectively, or in a 2-year rat study at doses of up to 300 mg/kg/day [approximately 31 times the exposure in humans at the recommended human dose].

#### **Emtricitabine**

Long-term carcinogenicity studies of FTC in rats and mice did not show any carcinogenicity potential.

#### **Tenofovir Alafenamide**

Because there is a lower tenofovir exposure in rats and mice after TAF administration compared to TDF, carcinogenicity studies were conducted only with TDF. Long-term oral carcinogenicity studies of TDF in mice and rats were carried out at exposures up to approximately 10 times

(mice) and 4 times (rats) those observed in humans at the 300 mg therapeutic dose of TDF for HIV-1 infection. At the high dose in female mice, liver adenomas were increased at tenofovir exposures 10 times (300 mg TDF) and 151 times (BIKTARVY) that in humans. In rats, the study was negative for carcinogenic findings at exposures up to 4 times that observed in humans at the therapeutic dose.

**Genotoxicity:**

***Bictegravir***

Bictegravir was not mutagenic or clastogenic in conventional genotoxicity assays.

***Emtricitabine***

FTC was not mutagenic or clastogenic in conventional genotoxicity assays.

***Tenofovir Alafenamide***

TAF was not mutagenic or clastogenic in conventional genotoxicity assays.

**17 SUPPORTING PRODUCT MONOGRAPHS**

GENVOYA (elvitegravir 150 mg/cobicistat 150 mg/emtricitabine 200 mg/tenofovir alafenamide 10 mg) tablets, Control No. 195789, Product Monograph, Gilead Sciences Canada, Inc. May 24, 2017.

VEMLIDY (tenofovir alafenamide 25 mg) tablets, Control No. 193066, Product Monograph, Gilead Sciences Canada, Inc. May 17, 2017.

## PATIENT MEDICATION INFORMATION

### READ THIS FOR SAFE AND EFFECTIVE USE OF YOUR MEDICINE

#### BIKTARVY®

#### bictegravir/emtricitabine/tenofovir alafenamide tablets

Read this carefully before you start taking **Biktarvy** and each time you get a refill. This leaflet is a summary and will not tell you everything about this drug. Talk to your healthcare professional about your medical condition and treatment and ask if there is any new information about **Biktarvy**.

#### Serious Warnings and Precautions

- You may experience a “Flare-up” of Hepatitis B Virus infection if you also have hepatitis B and stop taking Biktarvy. This may result in your Hepatitis B infection becoming worse than before. Do not stop taking Biktarvy without your doctor’s advice. If you stop taking Biktarvy, tell your doctor immediately about any new, unusual or worsening symptoms that you notice after stopping treatment. After you stop taking Biktarvy, your doctor will still need to check your health and take blood tests regularly to check your liver.

#### What is Biktarvy used for?

**Biktarvy** is a single tablet for the treatment of human immunodeficiency virus 1 (HIV-1) infection in adults and children who weigh at least 25 kg (55 lbs). **Biktarvy** is for people who do not have an HIV virus that is resistant to the components in **Biktarvy**.

#### How does Biktarvy work?

**Biktarvy** reduces the amount of HIV in your body and keeps it at a low level. **Biktarvy** also increases the CD4+ (T) cell count in your blood. CD4 cells are white blood cells that are important in helping your body to fight infection.

#### What are the ingredients in Biktarvy?

Each tablet has the following medicines: bictegravir (as bictegravir sodium), emtricitabine, tenofovir alafenamide (as tenofovir alafenamide hemifumarate)

Each tablet has the following ingredients that are not medicines: croscarmellose sodium, iron oxide black, iron oxide red, magnesium stearate, microcrystalline cellulose, polyethylene glycol, polyvinyl alcohol, talc, titanium dioxide.

#### Biktarvy comes in the following dosage forms:

**Biktarvy** is available as purplish brown capsule-shaped tablets. Each tablet has 50 mg of bictegravir (equivalent to 52.5 mg of bictegravir sodium), 200 mg of emtricitabine and 25 mg of tenofovir alafenamide (equivalent to 28.0 mg of tenofovir alafenamide hemifumarate).

#### Do not take Biktarvy if:

- You are allergic to bictegravir, emtricitabine, tenofovir alafenamide or any of the other ingredients of this medicine (Read “What are the ingredients in **Biktarvy**?” above).



- You are currently taking dofetilide\* (Tikosyn®)
- You are currently taking rifampin (Rifadin®, Rifamate®, Rifater®, Rimactane®)
- You are currently taking St. John's wort (*Hypericum perforatum*), an herbal remedy used to treat depression and anxiety

\*Not available in Canada

**To help avoid side effects and ensure proper use, talk to your healthcare professional before you take Biktarvy. Talk about any health conditions or problems you may have, including if you:**

- Have liver problems or a history of liver disease, including hepatitis B virus infection (see Serious Warnings and Precautions box and Serious Side Effects table).
- Have kidney problems. Kidney problems, including kidney failure, have occurred in patients taking tenofovir. If you have kidney problems and are taking **Biktarvy** along with certain medicines such as non-steroidal anti-inflammatory drugs, your kidney problems could get worse.
- Have lactic acidosis (high levels of acid in the blood). See the Serious Side Effects table for symptoms and contact your doctor right away if you get these symptoms.

**Other warnings you should know about:**

***If you are pregnant or plan to become pregnant:***

It is not known if **Biktarvy** can harm your unborn child. Tell your healthcare provider if you become pregnant while taking **Biktarvy**.

**Pregnancy Registry:** There is a pregnancy registry for women who take antiviral medicines during pregnancy. This registry collects information about your health and your baby's health. If you become pregnant while taking **Biktarvy**, talk with your doctor about taking part in this registry.

***If you are breast-feeding or plan to breast-feed:***

Do not breast-feed if you have HIV because of the chance of passing the HIV virus to your baby. One of the ingredients of **Biktarvy**, emtricitabine, can be passed to your baby in your breast milk and may cause harm to your baby. It is not known if the other components can be passed to your baby in breast milk. If you are a woman who has or will have a baby, talk with your doctor about the best way to feed your baby.

***Blood Sugar and Fat Levels:***

Your blood sugar levels (glucose) or levels of fats (lipids) in your blood may increase with HIV treatment. Your doctor may order blood tests for you.

**Tell your healthcare professional about all the medicines you take, including any drugs, vitamins, minerals, natural supplements or alternative medicines.**

## Serious Drug Interactions

### Do not take Biktarvy if:

- You are currently taking dofetilide\* (Tikosyn®).
- You are currently taking rifampin (Rifadin®, Rifamate®, Rifater®, Rimactane®).
- You are currently taking St. John's wort (*Hypericum perforatum*), an herbal remedy used to treat depression and anxiety.

\*Not available in Canada

### Drugs that should not be taken with Biktarvy:

- Any other medicines that contain tenofovir (ATRIPLA®, COMPLERA®, DESCOVY®, Delstrigo®, GENVOYA®, ODEFSEY®, STRIBILD®, Symtuza™, TRUVADA®, VEMLIDY®, VIREAD®).
- Any other medicines that contain emtricitabine or lamivudine (ATRIPLA, COMPLERA, DESCOVY, Delstrigo®, Dovato®, EMTRIVA®, GENVOYA, ODEFSEY, STRIBILD, Symtuza, TRUVADA, 3TC, Combivir®, Heptovir®, Kivexa®, Triumeq®, Trizivir®).
- Adefovir dipivoxil (HEPSERA®).

### The following may interact with Biktarvy:

- Medicines used for treating HIV, containing:
  - atazanavir
- Antibiotics, used to treat bacterial infections including tuberculosis, containing:
  - rifabutin or rifapentine
- Anticonvulsants, used to treat epilepsy, such as:
  - carbamazepine, oxcarbazepine, phenobarbital or phenytoin
- Antacids for stomach ulcers, heartburn or acid reflux such as:
  - aluminium/magnesium hydroxide or calcium carbonate
- Mineral supplements and vitamins, containing:
  - calcium or iron
- Ulcer-healing medication, such as:
  - sucralfate

**If you are taking an antacid**, a mineral supplement or vitamin containing **calcium or iron**, or an **ulcer healing medication**, take it at least 2 hours before or at least 2 hours after **Biktarvy**, or take it with **Biktarvy** together with food.

### How to take Biktarvy:

- Always take this medicine exactly as your doctor has told you. Check with your doctor or pharmacist if you are not sure.
- Do not run out of **Biktarvy**. Refill your prescription or talk to your doctor before your **Biktarvy** is all gone.
- Do not stop taking **Biktarvy** without first talking to your doctor.

### Usual dose:

Adults and children who weigh at least 25 kg (55 lbs): Take one tablet each day with or without food. Try to take the tablet at the same time each day.

#### Adults on Dialysis:

- If you are on dialysis, take your daily dose of Biktarvy following dialysis.

#### Overdose:

If you think you, or a person you are caring for, have taken too much Biktarvy, contact your healthcare professional, hospital emergency department or regional poison control centre immediately, even if there are no symptoms.

#### Missed dose:

It is important not to miss a dose of **Biktarvy**.

- **If you miss a dose of Biktarvy** and you notice **within 18 hours** of the time you usually take **Biktarvy**, take the tablet as soon as you can. Then take the next dose as usual.
- **If you miss a dose of Biktarvy** and you notice **after 18 hours**, wait and take the next dose at your usual time. Do NOT take a double dose (two doses close together).

#### What are possible side effects from using Biktarvy?

Like all medicines, **Biktarvy** can have side effects. When treating HIV infection, it is not always possible to tell whether some of the undesirable effects that occur are caused by **Biktarvy**, by other medicines you are taking at the same time or by the HIV infection. For this reason it is very important that you inform your doctor about any changes in your health.

Common side effects of **Biktarvy** are:

- Diarrhea.
- Headache.
- Nausea.
- Tiredness.
- Dizziness.
- Trouble sleeping.
- Abnormal dreams.

Less common side effects are indigestion, gas, depression, rash and thoughts of suicide.

Other side effects may include swelling in the face, lips, tongue, or throat (angioedema); hives (urticaria).

These are not all the possible side effects you may feel when taking **Biktarvy**.

If you experience any side effects not listed here, contact your healthcare professional.

Changes to your immune system (Immune Reconstitution Inflammatory Syndrome) can happen when you start taking HIV-1 medicines. Your immune system may get stronger and begin to fight infections that have been hidden in your body for a long time.

- Autoimmune disorders (when the immune system attacks healthy body tissue) may also occur after you start taking medicines for HIV infection. Examples of this include: Grave's disease (which affects the thyroid gland), Guillain-Barré syndrome (which affects the

nervous system), polymyositis (which affects the muscles), or autoimmune hepatitis (which affects the liver). Autoimmune disorders may occur many months after the start of treatment. Look for any other symptoms such as:

- high temperature (fever), redness, rash or swelling
- joint or muscle pain
- numbness or weakness beginning in the hands and feet and moving up towards the trunk of the body
- palpitations (chest pain) or rapid heart rate

If you notice these or any symptoms of inflammation or infection, tell your doctor immediately.

Serious side effects and what to do about them			
Symptom / effect	Talk to your healthcare professional		Stop taking drug and get immediate medical help
	Only if severe	In all cases	
<p><b><u>RARE</u></b>            Effect: Lactic acidosis            Symptoms:</p> <ul style="list-style-type: none"> <li>• Feeling very weak or tired</li> <li>• Unusual muscle pain</li> <li>• Stomach pain with nausea and vomiting</li> <li>• Feeling unusually cold, especially in arms and legs</li> <li>• Feeling dizzy or lightheaded</li> <li>• Fast or irregular heartbeat</li> <li>• Fast and deep breathing</li> </ul>		<ul style="list-style-type: none"> <li>✓</li> <li>✓</li> <li>✓</li> <li>✓</li> <li>✓</li> <li>✓</li> <li>✓</li> </ul>	

Serious side effects and what to do about them			
Symptom / effect	Talk to your healthcare professional		Stop taking drug and get immediate medical help
	Only if severe	In all cases	
<p><b><u>RARE</u></b>            Effect: Severe skin rash (Stevens-Johnson syndrome/toxic epidermal necrolysis)            Symptoms:</p> <ul style="list-style-type: none"> <li>• Blisters or peeling of the skin</li> <li>• Blisters or peeling of the mouth, lips and throat</li> <li>• Fever and general ill feeling.</li> </ul>			<ul style="list-style-type: none"> <li>✓</li> <li>✓</li> <li>✓</li> </ul>
<p><b><u>VERY RARE</u></b>            Effect: Flare-ups of hepatitis B virus infection following drug discontinuation            Symptoms:</p> <ul style="list-style-type: none"> <li>• Jaundice (skin or the white part of eyes turns yellow)</li> <li>• Urine turns dark</li> <li>• Bowel movements (stools) turn light in color</li> <li>• Loss of appetite for several days or longer</li> <li>• Feeling sick to your stomach (nausea)</li> <li>• Lower stomach pain</li> </ul>		<ul style="list-style-type: none"> <li>✓</li> <li>✓</li> <li>✓</li> <li>✓</li> <li>✓</li> <li>✓</li> </ul>	

If you have a troublesome symptom or side effect that is not listed here or becomes bad enough to interfere with your daily activities, talk to your healthcare professional.

### Reporting Side Effects

You can report any suspected side effects associated with the use of health products to Health Canada by:

- Visiting the Web page on Adverse Reaction Reporting (<https://www.canada.ca/en/health-canada/services/drugs-health-products/medeffect-canada.html>) for information on how to report online, by mail or by fax; or
- Calling toll-free at 1-866-234-2345.

*NOTE: Contact your health professional if you need information about how to manage your side effects. The Canada Vigilance Program does not provide medical advice.*

### Storage:

#### Bottles

- Store **Biktarvy** below 30 °C (86 °F).

- Keep **Biktarvy** in its original container and keep the container tightly closed.
- Do not use **Biktarvy** if the seal over the bottle opening is broken or missing.
- Keep this medicine out of reach and sight of children.
- Do not use this medicine after the expiry date which is stated on the bottle after {EXP}. The expiry date refers to the last day of that month.

#### Blister Pack

- Store **Biktarvy** between 15-30 °C (59-86 °F).
- Keep **Biktarvy** in its original container.
- Do not use **Biktarvy** if the foil over the blister or the seal around the blister card is broken or missing.
- Keep this medicine out of reach and sight of children.
- Do not use this medicine after the expiry date which is stated on the carton and blister card after {EXP}. The expiry date refers to the last day of that month.

#### **If you want more information about Biktarvy:**

- Talk to your healthcare professional.
- Find the full product monograph that is prepared for healthcare professionals and includes this Patient Medication Information by visiting the Health Canada website (<https://www.canada.ca/en/health-canada.html>); the manufacturer's website [www.gilead.ca](http://www.gilead.ca), or by calling 1-866-207-4267.

This leaflet was prepared by Gilead Sciences Canada, Inc.

Last Revised November 2, 2021

#### **Gilead Sciences, Inc.**

Foster City, CA 94404  
USA

#### **Gilead Sciences Canada, Inc.**

Mississauga, ON L5N 2W3

ATRIPLA<sup>®</sup>, BIKTARVY<sup>®</sup>, COMPLERA<sup>®</sup>, DESCOVY<sup>®</sup>, EMTRIVA<sup>®</sup>, GENVOYA<sup>®</sup>, HEPSERA<sup>®</sup>, ODEFSEY<sup>®</sup>, STRIBILD<sup>®</sup>, TRUVADA<sup>®</sup>, VEMLIDY<sup>®</sup> and VIREAD<sup>®</sup> are trademarks of Gilead Sciences, Inc. or its related companies.

All other marks referenced herein are the property of their respective owners.

© 2021 Gilead Sciences, Inc. All rights reserved.



e203718-GS-006